

# ATM Rabbit Polyclonal Antibody



CAB15645

---

## Product Information

### Size:

20uL, 50uL, 100uL, 200uL

### Observed MW:

### Calculated MW:

350kDa

### Applications:

IF

### Reactivity:

Human, Rat

## Antibody Information

### Recommended dilutions:

IF 1:50 - 1:200

### Source:

Rabbit

### Isotype:

IgG

### Purification:

Affinity purification

## Protein Background

The protein encoded by this gene belongs to the PI3/PI4-kinase family. This protein is an important cell cycle checkpoint kinase that phosphorylates; thus, it functions as a regulator of a wide variety of downstream proteins, including tumor suppressor proteins p53 and BRCA1, checkpoint kinase CHK2, checkpoint proteins RAD17 and RAD9, and DNA repair protein NBS1. This protein and the closely related kinase ATR are thought to be master controllers of cell cycle checkpoint signaling pathways that are required for cell response to DNA damage and for genome stability. Mutations in this gene are associated with ataxia telangiectasia, an autosomal recessive disorder.

## Immunogen information

### Gene ID:

472

### Uniprot

Q13315

### Synonyms:

AT1; ATA; ATC; ATD; ATDC; ATE; TEL1; TELO1; ATM

### Immunogen:

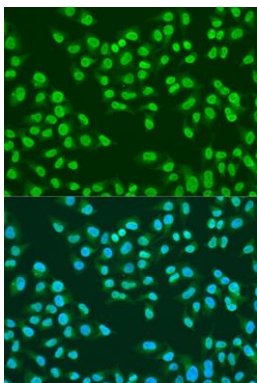
A synthetic peptide corresponding to a sequence within amino acids 1900-2000 of human ATM (NP\_000042.3).

### Storage:

Store at -20°C. Avoid freeze / thaw cycles. Buffer: PBS with 0.02% sodium azide, 50% glycerol, pH7.3.

## Product Images

---



Immunofluorescence analysis of U2OS cells using ATM antibody (CAB15645) at dilution of 1:100. Blue: DAPI for nuclear staining.