

BMP6 Rabbit Polyclonal Antibody



CAB15648

Product Information

Size:

20uL, 50uL, 100uL, 200uL

Observed MW:

Calculated MW:

57kDa

Applications:

IF

Reactivity:

Human

Antibody Information

Recommended dilutions:

IF 1:50 - 1:200

Source:

Rabbit

Isotype:

IgG

Purification:

Affinity purification

Protein Background

The bone morphogenetic proteins (BMPs) are a family of secreted signaling molecules that can induce ectopic bone growth. Many BMPs are part of the transforming growth factor-beta (TGFB) superfamily. BMPs were originally identified by an ability of demineralized bone extract to induce endochondral osteogenesis in vivo in an extraskeletal site. Based on its expression early in embryogenesis, the BMP encoded by this gene has a proposed role in early development. In addition, the fact that this BMP is closely related to BMP5 and BMP7 has led to speculation of possible bone inductive activity.

Immunogen information

Gene ID:

654

Uniprot

P22004

Synonyms:

BMP6; VGR; VGR1

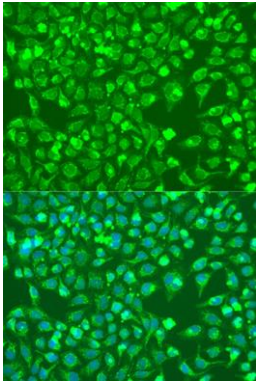
Immunogen:

Recombinant fusion protein containing a sequence corresponding to amino acids 375-513 of human BMP6 (NP_001709.1).

Storage:

Store at -20°C. Avoid freeze / thaw cycles. Buffer: PBS with 0.02% sodium azide, 50% glycerol, pH7.3.

Product Images



Immunofluorescence analysis of U2OS cells using BMP6 antibody (CAB15648) at dilution of 1:100. Blue: DAPI for nuclear staining.