

# TSPO Rabbit Polyclonal Antibody



CAB15649

## Product Information

### Size:

20uL, 50uL, 100uL, 200uL

### Observed MW:

19kDa

### Calculated MW:

10kDa/18kDa

### Applications:

WB IF

### Reactivity:

Human, Mouse, Rat

## Antibody Information

### Recommended dilutions:

WB 1:500 - 1:2000 IF 1:50 - 1:100

### Source:

Rabbit

### Isotype:

IgG

### Purification:

Affinity purification

## Protein Background

Present mainly in the mitochondrial compartment of peripheral tissues, the protein encoded by this gene interacts with some benzodiazepines and has different affinities than its endogenous counterpart. The protein is a key factor in the flow of cholesterol into mitochondria to permit the initiation of steroid hormone synthesis. Alternatively spliced transcript variants have been reported; one of the variants lacks an internal exon and is considered non-coding, and the other variants encode the same protein.

## Immunogen information

### Gene ID:

706

### Uniprot

P30536

### Synonyms:

TSPO; BPBS; BZRP; DBI; IBP; MBR; PBR; PBS; PKBS; PTBR; mDRC; pk18

### Immunogen:

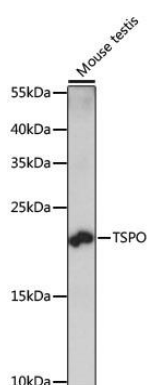
Recombinant fusion protein containing a sequence corresponding to amino acids 1-50 of human TSPO (NP\_000705.2).

### Storage:

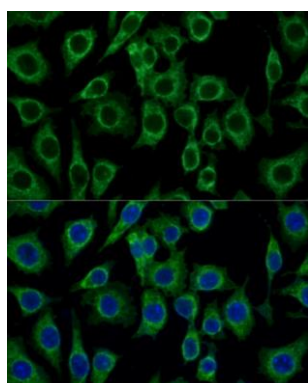
Store at -20°C. Avoid freeze / thaw cycles. Buffer: PBS with 0.02% sodium azide, 50% glycerol, pH7.3.

## Product Images

---



Western blot analysis of extracts of mouse testis, using TSPO antibody (CAB15649) at 1:1000 dilution. Secondary antibody: HRP Goat Anti-Rabbit IgG (H+L) (CABS014) at 1:10000 dilution. Lysates/proteins: 25ug per lane. Blocking buffer: 3% nonfat dry milk in TBST. Detection: ECL Basic Kit (CABM00020). Exposure time: 10s.



Immunofluorescence analysis of L929 cells using TSPO Polyclonal Antibody (CAB15649) at dilution of 1:100 (40x lens). Blue: DAPI for nuclear staining.