

CAMP Rabbit Polyclonal Antibody



CAB15653

Product Information

Size:

20uL, 50uL, 100uL, 200uL

Observed MW:

15kDa

Calculated MW:

19kDa

Applications:

WB IHC IF

Reactivity:

Human, Mouse, Rat

Protein Background

This gene encodes a member of an antimicrobial peptide family, characterized by a highly conserved N-terminal signal peptide containing a cathelin domain and a structurally variable cationic antimicrobial peptide, which is produced by extracellular proteolysis from the C-terminus. In addition to its antibacterial, antifungal, and antiviral activities, the encoded protein functions in cell chemotaxis, immune mediator induction, and inflammatory response regulation.

Immunogen information

Gene ID:

820

Uniprot

P49913

Synonyms:

CAMP; CAP-18; CAP18; CRAMP; FALL-39; FALL39; HSD26; LL37

Antibody Information

Recommended dilutions:

WB 1:500 - 1:2000 IHC 1:50
- 1:200 IF 1:50 - 1:200

Source:

Rabbit

Isotype:

IgG

Purification:

Affinity purification

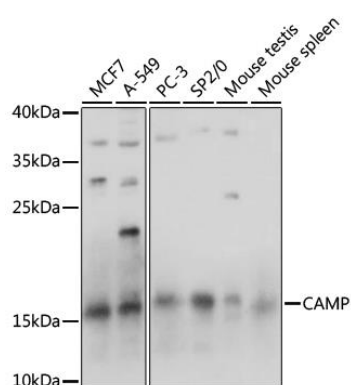
Immunogen:

Recombinant fusion protein containing a sequence corresponding to amino acids 31-170 of human CAMP (NP_004336.3).

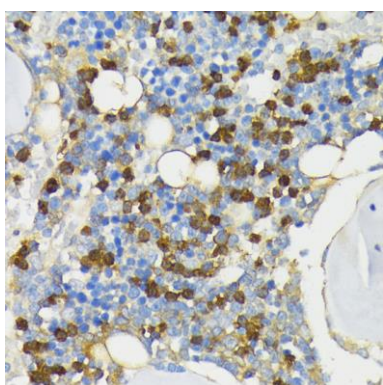
Storage:

Store at -20°C. Avoid freeze / thaw cycles. Buffer: PBS with 0.02% sodium azide, 50% glycerol, pH7.3.

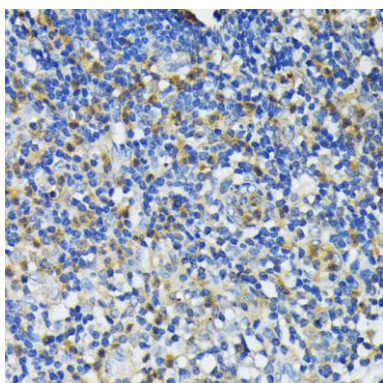
Product Images



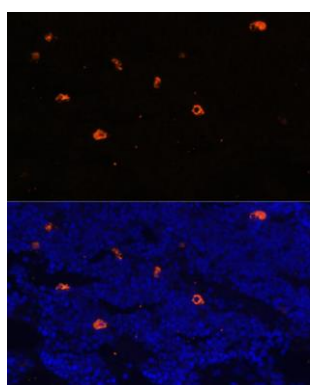
Western blot analysis of extracts of various cell lines, using CAMP antibody (CAB15653) at 1:1000 dilution. Secondary antibody: HRP Goat Anti-Rabbit IgG (H+L) (CABS014) at 1:10000 dilution. Lysates/proteins: 25ug per lane. Blocking buffer: 3% nonfat dry milk in TBST. Detection: ECL Basic Kit (CABM00020). Exposure time: 10s.



Immunohistochemistry of paraffin-embedded rat bone marrow using CAMP antibody (CAB15653) at dilution of 1:200 (40x lens).



Immunohistochemistry of paraffin-embedded human appendix using CAMP antibody (CAB15653) at dilution of 1:200 (40x lens).



Immunofluorescence analysis of rat bone marrow using CAMP antibody (CAB15653) at dilution of 1:100. Blue: DAPI for nuclear staining.