

CDC20 Rabbit Polyclonal Antibody



CAB15656

Product Information

Size:

20uL, 50uL, 100uL, 200uL

Observed MW:

55kDa

Calculated MW:

54kDa

Applications:

WB IHC IF IP

Reactivity:

Human, Mouse, Rat

Protein Background

CDC20 appears to act as a regulatory protein interacting with several other proteins at multiple points in the cell cycle. It is required for two microtubule-dependent processes, nuclear movement prior to anaphase and chromosome separation.

Immunogen information

Gene ID:

991

Uniprot

Q12834

Synonyms:

CDC20; CDC20A; bA276H19.3; p55CDC

Antibody Information

Recommended dilutions:

WB 1:500 - 1:2000 IHC 1:50
- 1:100 IF 1:50 - 1:100 IP
1:50 - 1:200

Source:

Rabbit

Isotype:

IgG

Purification:

Affinity purification

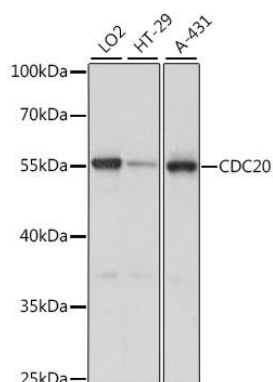
Immunogen:

Recombinant fusion protein containing a sequence corresponding to amino acids 1-270 of human CDC20 (NP_001246.2).

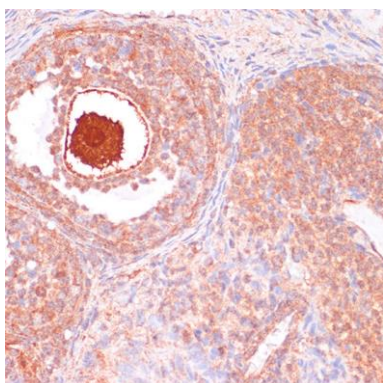
Storage:

Store at -20°C. Avoid freeze / thaw cycles. Buffer: PBS with 0.02% sodium azide, 50% glycerol, pH7.3.

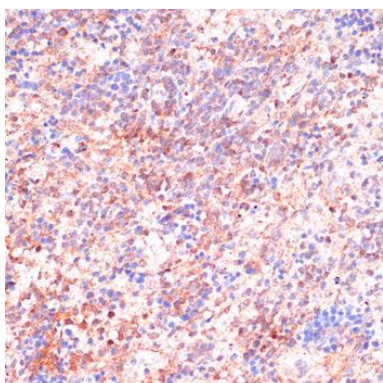
Product Images



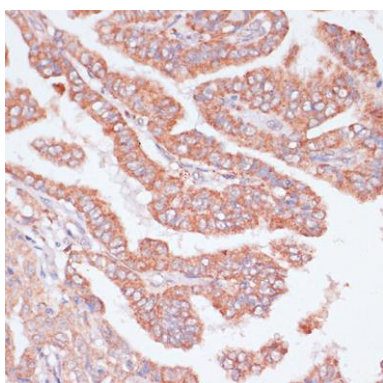
Western blot analysis of extracts of various cell lines, using CDC20 antibody (CAB15656) at 1:1000 dilution. Secondary antibody: HRP Goat Anti-Rabbit IgG (H+L) (CABS014) at 1:10000 dilution. Lysates/proteins: 25ug per lane. Blocking buffer: 3% nonfat dry milk in TBST. Detection: ECL Basic Kit (CABM00020). Exposure time: 5s.



Immunohistochemistry of paraffin-embedded Rat ovary using CDC20 antibody (CAB15656) at dilution of 1:100 (40x lens).



Immunohistochemistry of paraffin-embedded Rat spleen using CDC20 antibody (CAB15656) at dilution of 1:100 (40x lens).



Immunohistochemistry of paraffin-embedded Human thyroid cancer using CDC20 antibody (CAB15656) at dilution of 1:100 (40x lens).