

CDC42 Rabbit Polyclonal Antibody



CAB15657

Product Information

Size:

20uL, 50uL, 100uL, 200uL

Observed MW:

Calculated MW:

21kDa

Applications:

IF

Reactivity:

Human

Antibody Information

Recommended dilutions:

IF 1:50 - 1:200

Source:

Rabbit

Isotype:

IgG

Purification:

Affinity purification

Protein Background

The protein encoded by this gene is a small GTPase of the Rho-subfamily, which regulates signaling pathways that control diverse cellular functions including cell morphology, migration, endocytosis and cell cycle progression. This protein is highly similar to *Saccharomyces cerevisiae* Cdc 42, and is able to complement the yeast *cdc42-1* mutant. The product of oncogene Dbl was reported to specifically catalyze the dissociation of GDP from this protein. This protein could regulate actin polymerization through its direct binding to Neural Wiskott-Aldrich syndrome protein (N-WASP), which subsequently activates Arp2/3 complex. Alternative splicing of this gene results in multiple transcript variants. Pseudogenes of this gene have been identified on chromosomes 3, 4, 5, 7, 8 and 20.

Immunogen information

Gene ID:

998

Uniprot

P60953

Synonyms:

CDC42; CDC42Hs; G25K; TKS

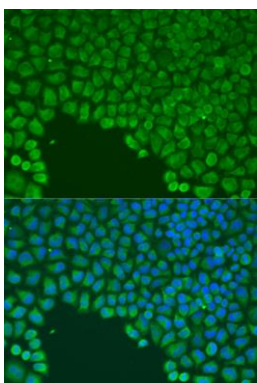
Immunogen:

Recombinant fusion protein containing a sequence corresponding to amino acids 1-186 of human CDC42 (NP_001782.1).

Storage:

Store at -20°C. Avoid freeze / thaw cycles. Buffer: PBS with 0.02% sodium azide, 50% glycerol, pH7.3.

Product Images



Immunofluorescence analysis of U2OS cells using CDC42 antibody (CAB15657) at dilution of 1:100. Blue: DAPI for nuclear staining.