

CPA3 Rabbit Polyclonal Antibody



CAB15658

Product Information

Size:

20uL, 50uL, 100uL, 200uL

Observed MW:

55kDa

Calculated MW:

48kDa

Applications:

WB

Reactivity:

Mouse, Rat

Protein Background

This gene encodes a member of the carboxypeptidase A family of zinc metalloproteases. The encoded preproprotein is proteolytically processed to generate a mature protease that is released by mast cells and may be involved in the degradation of endogenous proteins and the inactivation of venom-associated peptides. Expression of this gene may be elevated in human asthma patients.

Immunogen information

Gene ID:

1359

Uniprot

P15088

Synonyms:

CPA3; MC-CPA

Antibody Information

Recommended dilutions:

WB 1:500 - 1:2000

Source:

Rabbit

Isotype:

IgG

Purification:

Affinity purification

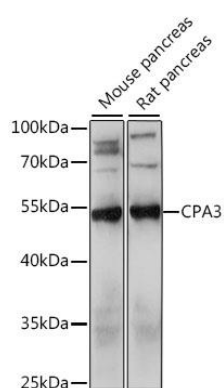
Immunogen:

Recombinant fusion protein containing a sequence corresponding to amino acids 110-417 of human CPA3 (NP_001861.2).

Storage:

Store at -20°C. Avoid freeze / thaw cycles. Buffer: PBS with 0.02% sodium azide, 50% glycerol, pH7.3.

Product Images



Western blot analysis of extracts of various cell lines, using CPA3 antibody (CAB15658) at 1:1000 dilution. Secondary antibody: HRP Goat Anti-Rabbit IgG (H+L) (CABS014) at 1:10000 dilution. Lysates/proteins: 25ug per lane. Blocking buffer: 3% nonfat dry milk in TBST. Detection: ECL Basic Kit (CABM00020). Exposure time: 60s.