

CSF3 Rabbit Polyclonal Antibody



CAB15660

Product Information

Size:

20uL, 50uL, 100uL, 200uL

Observed MW:

Refer to figures

Calculated MW:

18kDa/21kDa/22kDa

Applications:

WB IF

Reactivity:

Human, Mouse, Rat

Protein Background

The protein encoded by this gene is a cytokine that controls the production, differentiation, and function of granulocytes. The active protein is found extracellularly. Alternatively spliced transcript variants have been described for this gene.

Immunogen information

Gene ID:

1440

Uniprot

P09919

Synonyms:

CSF3; C17orf33; CSF3OS; GCSF

Antibody Information

Recommended dilutions:

WB 1:500 - 1:2000 IF 1:50 - 1:200

Source:

Rabbit

Isotype:

IgG

Purification:

Affinity purification

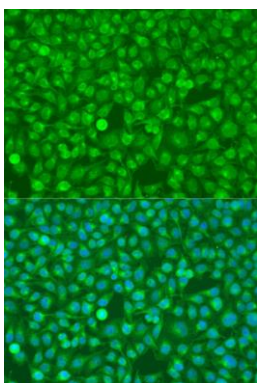
Immunogen:

Recombinant fusion protein containing a sequence corresponding to amino acids 30-207 of human CSF3 (NP_000750.1).

Storage:

Store at -20°C. Avoid freeze / thaw cycles. Buffer: PBS with 0.02% sodium azide, 50% glycerol, pH7.3.

Product Images



Immunofluorescence analysis of U2OS cells using CSF3 antibody (CAB15660) at dilution of 1:100. Blue: DAPI for nuclear staining.