

DRP2 Rabbit Polyclonal Antibody



CAB15663

Product Information

Size:

20uL, 50uL, 100uL, 200uL

Observed MW:

88kDa

Calculated MW:

99kDa/107kDa

Applications:

WB

Reactivity:

Mouse, Rat

Protein Background

Members of the dystrophin family of proteins perform a critical role in the maintenance of membrane-associated complexes at points of intercellular contact in vertebrate cells. The protein encoded by this gene is predicted to resemble certain short C-terminal isoforms of dystrophin and dystrophin-related protein 1 (DRP1 or utrophin). DRP2 is expressed principally in the brain and spinal cord. Two transcript variants encoding different isoforms have been found for this gene.

Immunogen information

Gene ID:

1821

Uniprot

Q13474

Synonyms:

DRP2; DRP-2

Antibody Information

Recommended dilutions:

WB 1:500 - 1:2000

Source:

Rabbit

Isotype:

IgG

Purification:

Affinity purification

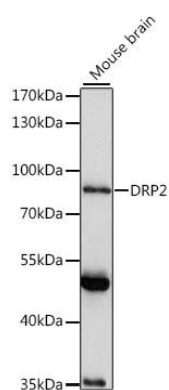
Immunogen:

Recombinant fusion protein containing a sequence corresponding to amino acids 1-240 of human DRP2 (NP_001930.2).

Storage:

Store at -20°C. Avoid freeze / thaw cycles. Buffer: PBS with 0.02% sodium azide, 50% glycerol, pH7.3.

Product Images



Western blot analysis of extracts of mouse brain, using DRP2 antibody (CAB15663) at 1:1000 dilution. Secondary antibody: HRP Goat Anti-Rabbit IgG (H+L) (CABS014) at 1:10000 dilution. Lysates/proteins: 25ug per lane. Blocking buffer: 3% nonfat dry milk in TBST. Detection: ECL Basic Kit (CABM00020). Exposure time: 30s.