

ETV4 Rabbit Polyclonal Antibody



CAB15667

Product Information

Size:

20uL, 50uL, 100uL, 200uL

Observed MW:

61KDa

Calculated MW:

23kDa/49kDa/53kDa

Applications:

WB

Reactivity:

Human, Mouse, Rat

Antibody Information

Recommended dilutions:

WB 1:500 - 1:2000

Source:

Rabbit

Isotype:

IgG

Purification:

Affinity purification

Protein Background

Immunogen information

Gene ID:

2118

Uniprot

P43268

Synonyms:

ETV4; E1A-F; E1AF; PEA3; PEAS3; ETS variant 4; Pea3/ETV4

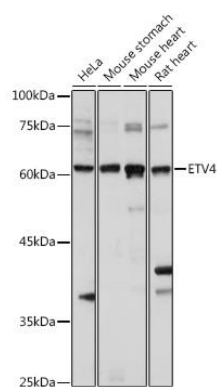
Immunogen:

Recombinant fusion protein containing a sequence corresponding to amino acids 1-207 of human ETV4 (NP_001248368.1).

Storage:

Store at -20°C. Avoid freeze / thaw cycles. Buffer: PBS with 0.02% sodium azide, 50% glycerol, pH7.3.

Product Images



Western blot analysis of extracts of various cell lines, using ETV4 antibody (CAB15667) at 1:1000 dilution. Secondary antibody: HRP Goat Anti-Rabbit IgG (H+L) (CABS014) at 1:10000 dilution. Lysates/proteins: 25ug per lane. Blocking buffer: 3% nonfat dry milk in TBST. Detection: ECL Basic Kit (CABM00020). Exposure time: 10s.