

# FOLR1 Rabbit Polyclonal Antibody



CAB15672

## Product Information

### Size:

20uL, 50uL, 100uL, 200uL

### Observed MW:

37kDa

### Calculated MW:

29kDa

### Applications:

WB IHC IF

### Reactivity:

Human, Mouse, Rat

## Antibody Information

### Recommended dilutions:

WB 1:500 - 1:2000 IHC 1:50  
- 1:200 IF 1:50 - 1:200

### Source:

Rabbit

### Isotype:

IgG

### Purification:

Affinity purification

## Protein Background

The protein encoded by this gene is a member of the folate receptor family. Members of this gene family bind folic acid and its reduced derivatives, and transport 5-methyltetrahydrofolate into cells. This gene product is a secreted protein that either anchors to membranes via a glycosyl-phosphatidylinositol linkage or exists in a soluble form. Mutations in this gene have been associated with neurodegeneration due to cerebral folate transport deficiency. Due to the presence of two promoters, multiple transcription start sites, and alternative splicing, multiple transcript variants encoding the same protein have been found for this gene.

## Immunogen information

### Gene ID:

2348

### Uniprot

P15328

### Synonyms:

FOLR1; FBP; FOLR

### Immunogen:

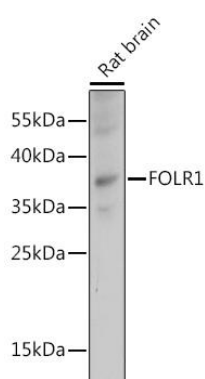
Recombinant fusion protein containing a sequence corresponding to amino acids 25-93 of human FOLR1 (NP\_000793.1).

### Storage:

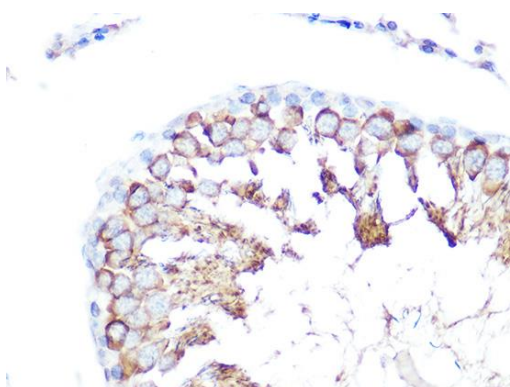
Store at -20°C. Avoid freeze / thaw cycles. Buffer: PBS with 0.02% sodium azide, 50% glycerol, pH7.3.

## Product Images

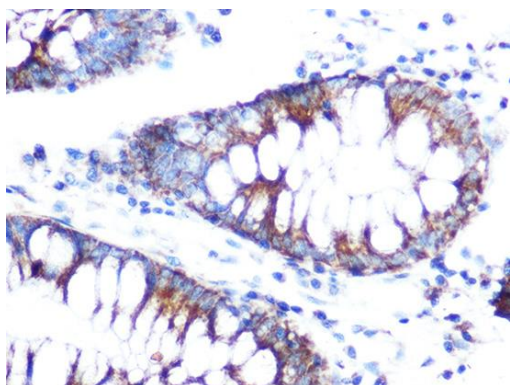
---



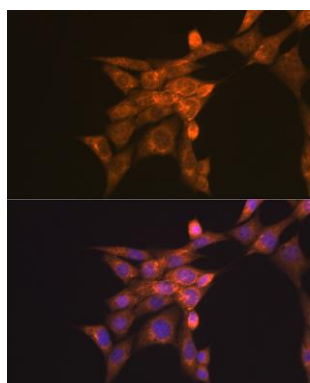
Western blot analysis of extracts of Rat brain, using FOLR1 antibody (CAB15672) at 1:1000 dilution. Secondary antibody: HRP Goat Anti-Rabbit IgG (H+L) (CABS014) at 1:10000 dilution. Lysates/proteins: 25ug per lane. Blocking buffer: 3% nonfat dry milk in TBST. Detection: ECL Basic Kit (CABM00020). Exposure time: 1s.



Immunohistochemistry of paraffin-embedded rat testis using FOLR1 Rabbit pAb (CAB15672) at dilution of 1:100 (40x lens).



Immunohistochemistry of paraffin-embedded human colon using FOLR1 Rabbit pAb (CAB15672) at dilution of 1:100 (40x lens).



Immunofluorescence analysis of NIH-3T3 cells using FOLR1 Rabbit pAb (CAB15672) at dilution of 1:100 (40x lens). Blue: DAPI for nuclear staining.