

GLRA2 Rabbit Polyclonal Antibody



CAB15673

Product Information

Size:

20uL, 50uL, 100uL, 200uL

Observed MW:

52kDa

Calculated MW:

42kDa/51kDa/52kDa

Applications:

WB IF

Reactivity:

Human, Mouse, Rat

Protein Background

The glycine receptor consists of two subunits, alpha and beta, and acts as a pentamer. The protein encoded by this gene is an alpha subunit and can bind strychnine. Several transcript variants encoding different isoforms have been found for this gene.

Immunogen information

Gene ID:

2742

Uniprot

P23416

Synonyms:

GLRA2; GLR

Antibody Information

Recommended dilutions:

WB 1:500 - 1:2000 IF 1:50 - 1:100

Source:

Rabbit

Isotype:

IgG

Purification:

Affinity purification

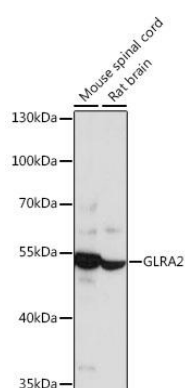
Immunogen:

Recombinant fusion protein containing a sequence corresponding to amino acids 350-420 of human GLRA2 (NP_002054.1).

Storage:

Store at -20°C. Avoid freeze / thaw cycles. Buffer: PBS with 0.02% sodium azide, 50% glycerol, pH7.3.

Product Images



Western blot analysis of extracts of various cell lines, using GLRA2 antibody (CAB15673) at 1:1000 dilution. Secondary antibody: HRP Goat Anti-Rabbit IgG (H+L) (CABS014) at 1:10000 dilution. Lysates/proteins: 25ug per lane. Blocking buffer: 3% nonfat dry milk in TBST. Detection: ECL Enhanced Kit (CABM00021). Exposure time: 1s.