

# GNGT1 Rabbit Polyclonal Antibody



CAB15675

---

## Product Information

### Size:

20uL, 50uL, 100uL, 200uL

### Observed MW:

10kDa

### Calculated MW:

8kDa

### Applications:

WB IF

### Reactivity:

Mouse, Rat

## Protein Background

This gene encodes the gamma subunit of transducin, a guanine nucleotide-binding protein (G protein) that is found in rod outer segments. Transducin, also known as GMPase, mediates the activation of a cyclic GTP-specific (guanosine monophosphate) phosphodiesterase by rhodopsin.

## Immunogen information

### Gene ID:

2792

### Uniprot

P63211

### Synonyms:

GNGT1; GNG1

## Antibody Information

### Recommended dilutions:

WB 1:500 - 1:2000 IF 1:50 - 1:100

### Source:

Rabbit

### Isotype:

IgG

### Purification:

Affinity purification

### Immunogen:

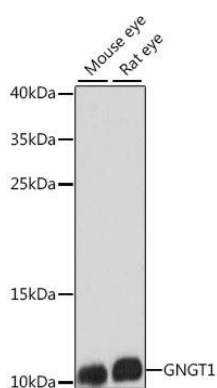
Recombinant fusion protein containing a sequence corresponding to amino acids 1-45 of human GNGT1 (NP\_068774.1).

### Storage:

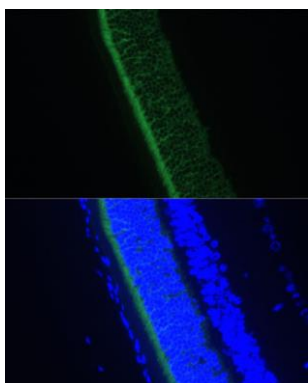
Store at -20°C. Avoid freeze / thaw cycles. Buffer: PBS with 0.02% sodium azide, 50% glycerol, pH7.3.

## Product Images

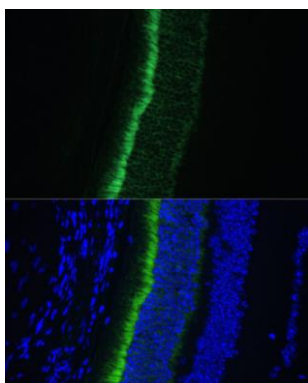
---



Western blot analysis of extracts of various cell lines, using GNGT1 antibody (CAB15675) at 1:1000 dilution. Secondary antibody: HRP Goat Anti-Rabbit IgG (H+L) (CABS014) at 1:10000 dilution. Lysates/proteins: 25ug per lane. Blocking buffer: 3% nonfat dry milk in TBST. Detection: ECL Basic Kit (CABM00020). Exposure time: 90s.



Immunofluorescence analysis of rat eye using GNGT1 Polyclonal Antibody (CAB15675) at dilution of 1:100 (40x lens). Blue: DAPI for nuclear staining.



Immunofluorescence analysis of mouse eye using GNGT1 Polyclonal Antibody (CAB15675) at dilution of 1:100 (40x lens). Blue: DAPI for nuclear staining.