

MAOB Rabbit Polyclonal Antibody



CAB1568

Product Information

Size:

20uL, 50uL, 100uL, 200uL

Observed MW:

60KDa

Calculated MW:

46kDa/58kDa

Applications:

WB IHC IF

Reactivity:

Human, Mouse, Rat

Protein Background

The protein encoded by this gene belongs to the flavin monoamine oxidase family. It is an enzyme located in the mitochondrial outer membrane. It catalyzes the oxidative deamination of biogenic and xenobiotic amines and plays an important role in the metabolism of neuroactive and vasoactive amines in the central nervous system and peripheral tissues. This protein preferentially degrades benzylamine and phenylethylamine.

Immunogen information

Gene ID:

4129

Uniprot

P27338

Synonyms:

MAOB

Antibody Information

Recommended dilutions:

WB 1:500 - 1:2000 IHC 1:50
- 1:200 IF 1:50 - 1:200

Source:

Rabbit

Isotype:

IgG

Purification:

Affinity purification

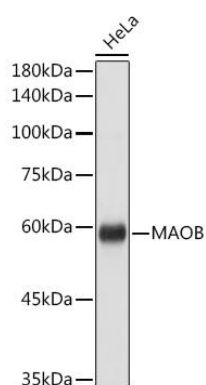
Immunogen:

Recombinant fusion protein containing a sequence corresponding to amino acids 1-260 of human MAOB (NP_000889.3).

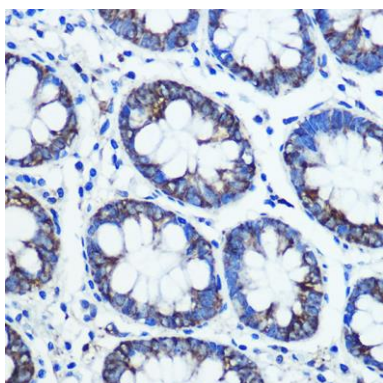
Storage:

Store at -20°C. Avoid freeze / thaw cycles. Buffer: PBS with 0.02% sodium azide, 50% glycerol, pH7.3.

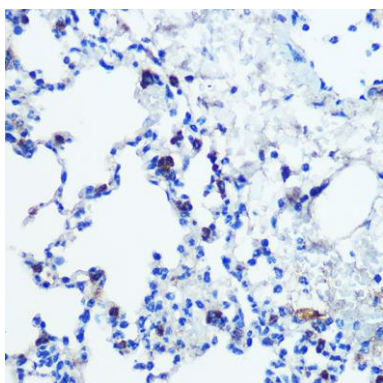
Product Images



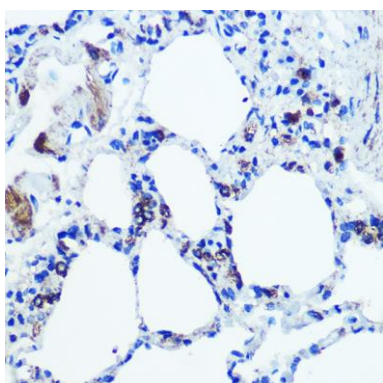
Western blot analysis of extracts of HeLa cells, using MAOB antibody (CAB1568) at 1:1000 dilution. Secondary antibody: HRP Goat Anti-Rabbit IgG (H+L) (CABS014) at 1:10000 dilution. Lysates/proteins: 25ug per lane. Blocking buffer: 3% nonfat dry milk in TBST. Detection: ECL Basic Kit (CABM00020). Exposure time: 1s.



Immunohistochemistry of paraffin-embedded human colon using MAOB Rabbit pAb (CAB1568) at dilution of 100 (40x lens).



Immunohistochemistry of paraffin-embedded mouse lung using MAOB Rabbit pAb (CAB1568) at dilution of 100 (40x lens).



Immunohistochemistry of paraffin-embedded rat lung using MAOB Rabbit pAb (CAB1568) at dilution of 100 (40x lens).