

KCND1 Rabbit Polyclonal Antibody



CAB15683

Product Information

Size:

20uL, 50uL, 100uL, 200uL

Observed MW:

71kDa

Calculated MW:

28kDa/71kDa

Applications:

WB

Reactivity:

Human, Mouse, Rat

Protein Background

This gene encodes a multipass membrane protein that comprises the pore subunit of the voltage-gated A-type potassium channel, which functions in the repolarization of membrane action potentials. Activity of voltage-gated potassium channels is important in a number of physiological processes, among them the regulation of neurotransmitter release, heart rate, insulin secretion, and smooth muscle contraction.

Immunogen information

Gene ID:

3750

Uniprot

Q9NSA2

Synonyms:

KCND1; KV4.1

Antibody Information

Recommended dilutions:

WB 1:500 - 1:2000

Source:

Rabbit

Isotype:

IgG

Purification:

Affinity purification

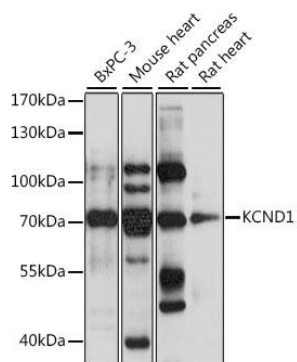
Immunogen:

Recombinant fusion protein containing a sequence corresponding to amino acids 488-647 of human KCND1 (NP_004970.3).

Storage:

Store at -20°C. Avoid freeze / thaw cycles. Buffer: PBS with 0.02% sodium azide, 50% glycerol, pH7.3.

Product Images



Western blot analysis of extracts of various cell lines, using KCND1 antibody (CAB15683) at 1:1000 dilution. Secondary antibody: HRP Goat Anti-Rabbit IgG (H+L) (CABS014) at 1:10000 dilution. Lysates/proteins: 25ug per lane. Blocking buffer: 3% nonfat dry milk in TBST. Detection: ECL Basic Kit (CABM00020). Exposure time: 10s.