

KCNS2 Rabbit Polyclonal Antibody



CAB15684

Product Information

Size:

20uL, 50uL, 100uL, 200uL

Observed MW:

54kDa

Calculated MW:

54kDa

Applications:

WB IHC IF

Reactivity:

Human, Mouse, Rat

Antibody Information

Recommended dilutions:

WB 1:500 - 1:2000 IHC 1:50
- 1:100 IF 1:50 - 1:100

Source:

Rabbit

Isotype:

IgG

Purification:

Affinity purification

Protein Background

Immunogen information

Gene ID:

3788

Uniprot

Q9ULS6

Synonyms:

KCNS2; KV9.2

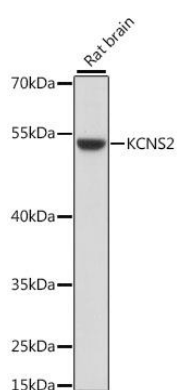
Immunogen:

Recombinant fusion protein containing a sequence corresponding to amino acids 1-187 of human KCNS2 (NP_065748.1).

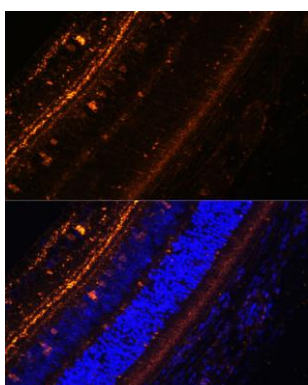
Storage:

Store at -20°C. Avoid freeze / thaw cycles. Buffer: PBS with 0.02% sodium azide, 50% glycerol, pH7.3.

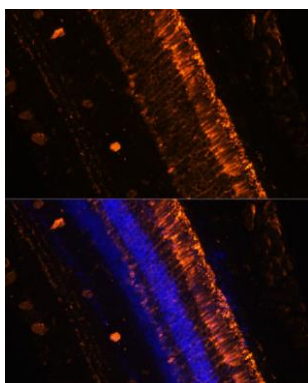
Product Images



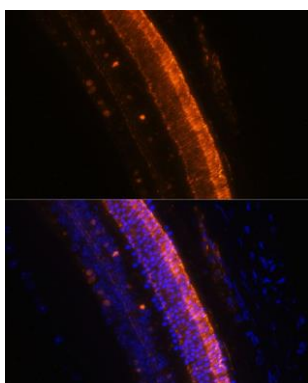
Western blot analysis of extracts of rat brain, using KCNS2 antibody (CAB15684) at 1:1000 dilution. Secondary antibody: HRP Goat Anti-Rabbit IgG (H+L) (CABS014) at 1:10000 dilution. Lysates/proteins: 25ug per lane. Blocking buffer: 3% nonfat dry milk in TBST. Detection: ECL Basic Kit (CABM00020). Exposure time: 90s.



Immunofluorescence analysis of rat eye using KCNS2 Polyclonal Antibody (CAB15684) at dilution of 1:100 (40x lens). Blue: DAPI for nuclear staining.



Immunofluorescence analysis of mouse eye using KCNS2 Polyclonal Antibody (CAB15684) at dilution of 1:100 (20x lens). Blue: DAPI for nuclear staining.



Immunofluorescence analysis of mouse eye using KCNS2 Polyclonal Antibody (CAB15684) at dilution of 1:100 (40x lens). Blue: DAPI for nuclear staining.