

HSL Rabbit Polyclonal Antibody



CAB15686

Product Information

Size:

20uL, 50uL, 100uL, 200uL

Observed MW:

81kDa

Calculated MW:

84kDa/116kDa

Applications:

WB

Reactivity:

Human, Mouse

Antibody Information

Recommended dilutions:

WB 1:500 - 1:2000

Source:

Rabbit

Isotype:

IgG

Purification:

Affinity purification

Protein Background

The protein encoded by this gene has a long and a short form, generated by use of alternative translational start codons. The long form is expressed in steroidogenic tissues such as testis, where it converts cholesteryl esters to free cholesterol for steroid hormone production. The short form is expressed in adipose tissue, among others, where it hydrolyzes stored triglycerides to free fatty acids.

Immunogen information

Gene ID:

3991

Uniprot

Q05469

Synonyms:

LIPE; AOMS4; FPLD6; HSL; LHS

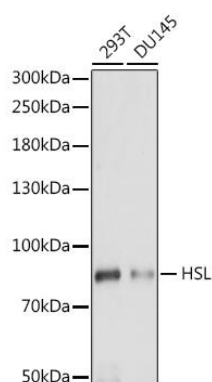
Immunogen:

A synthetic peptide corresponding to a sequence within amino acids 900-1000 of human LIPE (NP_005348.2).

Storage:

Store at -20°C. Avoid freeze / thaw cycles. Buffer: PBS with 0.02% sodium azide, 50% glycerol, pH7.3.

Product Images



Western blot analysis of extracts of various cell lines, using HSL antibody (CAB15686) at 1:1000 dilution. Secondary antibody: HRP Goat Anti-Rabbit IgG (H+L) (CABS014) at 1:10000 dilution. Lysates/proteins: 25ug per lane. Blocking buffer: 3% nonfat dry milk in TBST. Detection: ECL Basic Kit (CABM00020). Exposure time: 90s.