

MAN2C1 Rabbit Polyclonal Antibody



CAB15688

Product Information

Size:

20uL, 50uL, 100uL, 200uL

Observed MW:

128kDa

Calculated MW:

104kDa/113kDa/115kDa/117kDa

Applications:

WB

Reactivity:

Mouse

Antibody Information

Recommended dilutions:

WB 1:500 - 1:2000

Source:

Rabbit

Isotype:

IgG

Purification:

Affinity purification

Protein Background

Immunogen information

Gene ID:

4123

Uniprot

Q9NTJ4

Synonyms:

MAN2C1; MAN6A8; MANA; MANA1

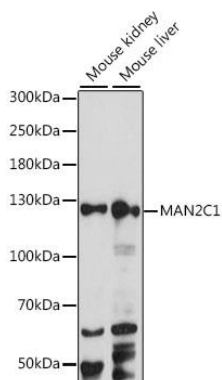
Immunogen:

Recombinant fusion protein containing a sequence corresponding to amino acids 1-300 of human MAN2C1 (NP_006706.2).

Storage:

Store at -20°C. Avoid freeze / thaw cycles. Buffer: PBS with 0.02% sodium azide, 50% glycerol, pH7.3.

Product Images



Western blot analysis of extracts of various cell lines, using MAN2C1 antibody (CAB15688) at 1:1000 dilution. Secondary antibody: HRP Goat Anti-Rabbit IgG (H+L) (CABS014) at 1:10000 dilution. Lysates/proteins: 25ug per lane. Blocking buffer: 3% nonfat dry milk in TBST. Detection: ECL Basic Kit (CABM00020). Exposure time: 30s.