

MMP14 Rabbit Polyclonal Antibody



CAB15691

Product Information

Size:

20uL, 50uL, 100uL, 200uL

Observed MW:

Calculated MW:

65kDa

Applications:

IF

Reactivity:

Human

Antibody Information

Recommended dilutions:

IF 1:50 - 1:200

Source:

Rabbit

Isotype:

IgG

Purification:

Affinity purification

Protein Background

Proteins of the matrix metalloproteinase (MMP) family are involved in the breakdown of extracellular matrix in normal physiological processes, such as embryonic development, reproduction, and tissue remodeling, as well as in disease processes, such as arthritis and metastasis. Most MMP's are secreted as inactive proproteins which are activated when cleaved by extracellular proteinases. However, the protein encoded by this gene is a member of the membrane-type MMP (MT-MMP) subfamily; each member of this subfamily contains a potential transmembrane domain suggesting that these proteins are expressed at the cell surface rather than secreted. This protein activates MMP2 protein, and this activity may be involved in tumor invasion.

Immunogen information

Gene ID:

4323

Uniprot

P50281

Synonyms:

MMP14; MMP-14; MMP-X1; MT-MMP; MT-MMP 1; MT1-MMP;
MT1MMP; MTMMP1; WNCHRS; MT-MMP1

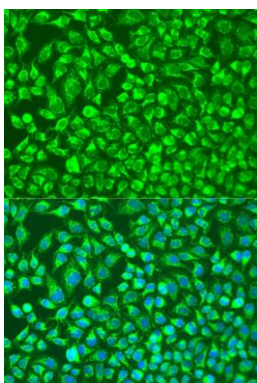
Immunogen:

A synthetic peptide of human MMP14

Storage:

Store at -20°C. Avoid freeze / thaw cycles. Buffer: PBS with 0.02% sodium azide, 50% glycerol, pH7.3.

Product Images



Immunofluorescence analysis of U2OS cells using MMP14 antibody (CAB15691) at dilution of 1:100. Blue: DAPI for nuclear staining.