

NDUFA4 Rabbit Polyclonal Antibody



CAB15693

Product Information

Size:

20uL, 50uL, 100uL, 200uL

Observed MW:

12kDa

Calculated MW:

9kDa

Applications:

WB IF

Reactivity:

Human, Mouse, Rat

Protein Background

The protein encoded by this gene belongs to the complex I 9kDa subunit family. Mammalian complex I of mitochondrial respiratory chain is composed of 45 different subunits. This protein has NADH dehydrogenase activity and oxidoreductase activity. It transfers electrons from NADH to the respiratory chain. The immediate electron acceptor for the enzyme is believed to be ubiquinone.

Immunogen information

Gene ID:

4697

Uniprot

O00483

Synonyms:

NDUFA4; CI-9k; CI-MLRQ; MLRQ

Antibody Information

Recommended dilutions:

WB 1:500 - 1:2000 IF 1:50 - 1:100

Source:

Rabbit

Isotype:

IgG

Purification:

Affinity purification

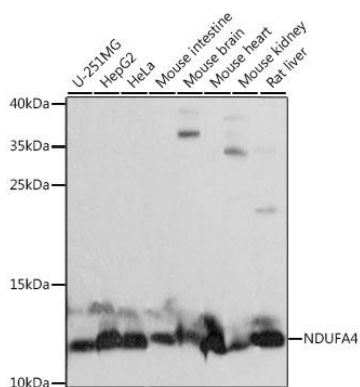
Immunogen:

Recombinant fusion protein containing a sequence corresponding to amino acids 1-81 of human NDUFA4 (NP_002480.1).

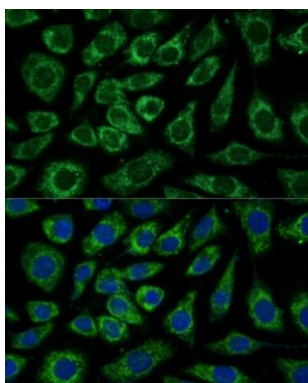
Storage:

Store at -20°C. Avoid freeze / thaw cycles. Buffer: PBS with 0.02% sodium azide, 50% glycerol, pH7.3.

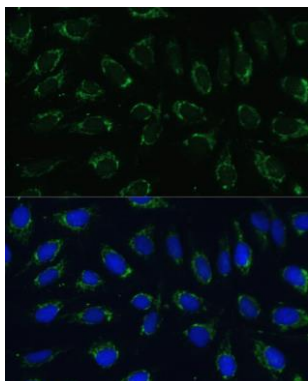
Product Images



Western blot analysis of extracts of various cell lines, using NDUFA4 antibody (CAB15693) at 1:1000 dilution. Secondary antibody: HRP Goat Anti-Rabbit IgG (H+L) (CABS014) at 1:10000 dilution. Lysates/proteins: 25ug per lane. Blocking buffer: 3% nonfat dry milk in TBST. Detection: ECL Basic Kit (CABM00020). Exposure time: 1s.



Immunofluorescence analysis of L929 cells using NDUFA4 Polyclonal Antibody (CAB15693) at dilution of 1:100 (40x lens). Blue: DAPI for nuclear staining.



Immunofluorescence analysis of U-2 OS cells using NDUFA4 Polyclonal Antibody (CAB15693) at dilution of 1:100 (40x lens). Blue: DAPI for nuclear staining.