

PHKA1 Rabbit Polyclonal Antibody



CAB15700

Product Information

Size:

20uL, 50uL, 100uL, 200uL

Observed MW:

137kDa

Calculated MW:

129kDa/135kDa/137kDa

Applications:

WB

Reactivity:

Human, Mouse

Antibody Information

Recommended dilutions:

WB 1:500 - 1:2000

Source:

Rabbit

Isotype:

IgG

Purification:

Affinity purification

Protein Background

Phosphorylase kinase is a polymer of 16 subunits, four each of alpha, beta, gamma and delta. The alpha subunit includes the skeletal muscle and hepatic isoforms, and the skeletal muscle isoform is encoded by this gene. The beta subunit is the same in both the muscle and hepatic isoforms, and encoded by one gene. The gamma subunit also includes the skeletal muscle and hepatic isoforms, which are encoded by two different genes. The delta subunit is a calmodulin and can be encoded by three different genes. The gamma subunits contain the active site of the enzyme, whereas the alpha and beta subunits have regulatory functions controlled by phosphorylation. The delta subunit mediates the dependence of the enzyme on calcium concentration. Mutations in this gene cause glycogen storage disease type 9D, also known as X-linked muscle glycogenosis. Alternatively spliced transcript variants encoding different isoforms have been identified in this gene. A pseudogene has been found on chromosome 1.

Immunogen information

Gene ID:

5255

Uniprot

P46020

Synonyms:

PHKA1; PHKA

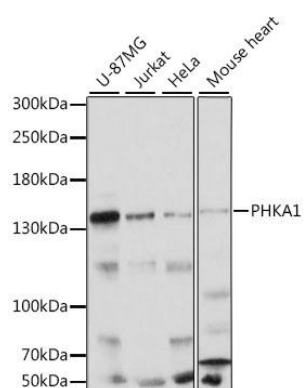
Immunogen:

Recombinant fusion protein containing a sequence corresponding to amino acids 600-820 of human PHKA1 (NP_001116142.1).

Storage:

Store at -20°C. Avoid freeze / thaw cycles. Buffer: PBS with 0.02% sodium azide, 50% glycerol, pH7.3.

Product Images



Western blot analysis of extracts of various cell lines, using PHKA1 antibody (CAB15700) at 1:1000 dilution. Secondary antibody: HRP Goat Anti-Rabbit IgG (H+L) (CABS014) at 1:10000 dilution. Lysates/proteins: 25ug per lane. Blocking buffer: 3% nonfat dry milk in TBST. Detection: ECL Basic Kit (CABM00020). Exposure time: 10s.