

# PLCG1 Rabbit Polyclonal Antibody



CAB15704

---

## Product Information

### Size:

20uL, 50uL, 100uL, 200uL

### Observed MW:

149kDa

### Calculated MW:

148kDa

### Applications:

WB IF

### Reactivity:

Human, Mouse, Rat

## Antibody Information

### Recommended dilutions:

WB 1:500 - 1:2000 IF 1:50 - 1:200

### Source:

Rabbit

### Isotype:

IgG

### Purification:

Affinity purification

## Protein Background

The protein encoded by this gene catalyzes the formation of inositol 1, 4, 5-trisphosphate and diacylglycerol from phosphatidylinositol 4, 5-bisphosphate. This reaction uses calcium as a cofactor and plays an important role in the intracellular transduction of receptor-mediated tyrosine kinase activators. For example, when activated by SRC, the encoded protein causes the Ras guanine nucleotide exchange factor RasGRP1 to translocate to the Golgi, where it activates Ras. Also, this protein has been shown to be a major substrate for heparin-binding growth factor 1 (acidic fibroblast growth factor)-activated tyrosine kinase. Two transcript variants encoding different isoforms have been found for this gene.

## Immunogen information

### Gene ID:

5335

### Uniprot

P19174

### Synonyms:

PLCG1; NCKAP3; PLC-II; PLC1; PLC148; PLCgamma1

### Immunogen:

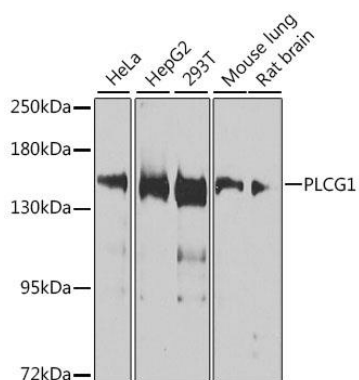
Recombinant fusion protein containing a sequence corresponding to amino acids 1202-1291 of human PLCG1 (NP\_002651.2).

### Storage:

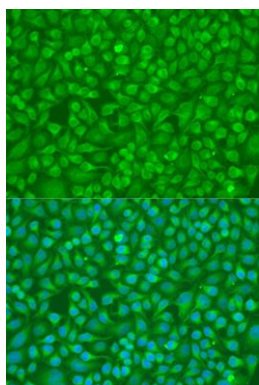
Store at -20°C. Avoid freeze / thaw cycles. Buffer: PBS with 0.02% sodium azide, 50% glycerol, pH7.3.

## Product Images

---



Western blot analysis of extracts of various cell lines, using PLCG1 antibody (CAB15704) at 1:1000 dilution. Secondary antibody: HRP Goat Anti-Rabbit IgG (H+L) (CABS014) at 1:10000 dilution. Lysates/proteins: 25ug per lane. Blocking buffer: 3% nonfat dry milk in TBST. Detection: ECL Basic Kit (CABM00020). Exposure time: 30s.



Immunofluorescence analysis of U2OS cells using PLCG1 antibody (CAB15704) at dilution of 1:100. Blue: DAPI for nuclear staining.