

# PRPSAP2 Rabbit Polyclonal Antibody



CAB15711

## Product Information

### Size:

20uL, 50uL, 100uL, 200uL

### Observed MW:

42kDa

### Calculated MW:

31kDa/35kDa/36kDa/40kDa

### Applications:

WB

### Reactivity:

Mouse

## Antibody Information

### Recommended dilutions:

WB 1:500 - 1:2000

### Source:

Rabbit

### Isotype:

IgG

### Purification:

Affinity purification

## Protein Background

This gene encodes a protein that associates with the enzyme phosphoribosylpyrophosphate synthetase (PRS). PRS catalyzes the formation of phosphoribosylpyrophosphate which is a substrate for synthesis of purine and pyrimidine nucleotides, histidine, tryptophan and NAD. PRS exists as a complex with two catalytic subunits and two associated subunits. This gene encodes a non-catalytic associated subunit of PRS. Alternate splicing results in multiple transcript variants.

## Immunogen information

### Gene ID:

5636

### Uniprot

O60256

### Synonyms:

PRPSAP2; PAP41

### Immunogen:

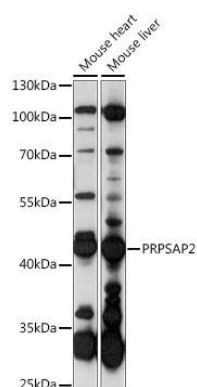
Recombinant fusion protein containing a sequence corresponding to amino acids 1-90 of human PRPSAP2 (NP\_002758.1).

### Storage:

Store at -20°C. Avoid freeze / thaw cycles. Buffer: PBS with 0.02% sodium azide, 50% glycerol, pH7.3.

## Product Images

---



Western blot analysis of extracts of various cell lines, using PRPSAP2 antibody (CAB15711) at 1:1000 dilution. Secondary antibody: HRP Goat Anti-Rabbit IgG (H+L) (CABS014) at 1:10000 dilution. Lysates/proteins: 25ug per lane. Blocking buffer: 3% nonfat dry milk in TBST. Detection: ECL Basic Kit (CABM00020). Exposure time: 15s.