

# P90RSK Rabbit Polyclonal Antibody



CAB15718

## Product Information

### Size:

20uL, 50uL, 100uL, 200uL

### Observed MW:

90kDa

### Calculated MW:

72kDa/81kDa/82kDa/83kDa

### Applications:

WB IHC IF

### Reactivity:

Human, Mouse, Rat

## Protein Background

This gene encodes a member of the RSK (ribosomal S6 kinase) family of serine/threonine kinases. This kinase contains 2 nonidentical kinase catalytic domains and phosphorylates various substrates, including members of the mitogen-activated kinase (MAPK) signalling pathway. The activity of this protein has been implicated in controlling cell growth and differentiation. Alternate transcriptional splice variants, encoding different isoforms, have been characterized.

## Immunogen information

### Gene ID:

6195

### Uniprot

Q15418

### Synonyms:

HU-1; MAPKAPK1A; RSK; RSK1; p90Rsk; RPS6KA1

## Antibody Information

### Recommended dilutions:

WB 1:500 - 1:2000 IHC

1:100 - 1:200 IF 1:50 -

1:200

### Source:

Rabbit

### Isotype:

IgG

### Purification:

Affinity purification

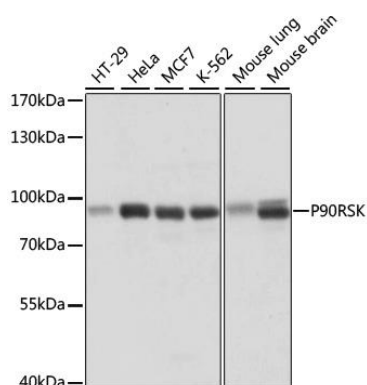
### Immunogen:

A synthetic peptide corresponding to a sequence within amino acids 600 to the C-terminus of human P90RSK (NP\_002944.2).

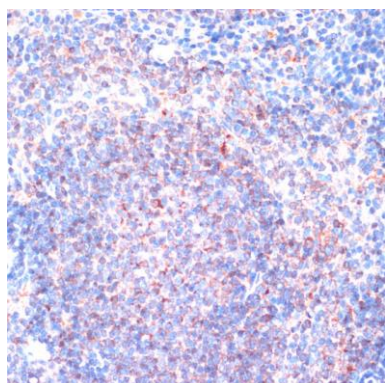
### Storage:

Store at -20°C. Avoid freeze / thaw cycles. Buffer: PBS with 0.02% sodium azide, 50% glycerol, pH7.3.

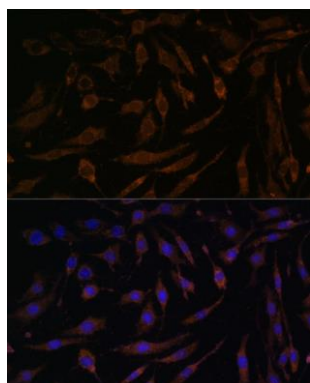
## Product Images



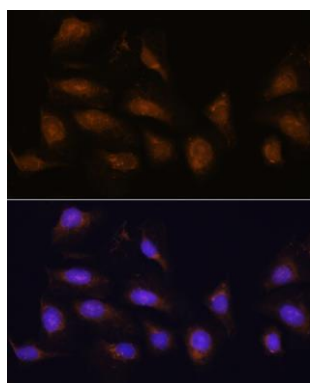
Western blot analysis of extracts of various cell lines, using P90RSK antibody (CAB15718) at 1:1000 dilution. Secondary antibody: HRP Goat Anti-Rabbit IgG (H+L) (CABS014) at 1:10000 dilution. Lysates/proteins: 25ug per lane. Blocking buffer: 3% nonfat dry milk in TBST. Detection: ECL Basic Kit (CABM00020). Exposure time: 1s.



Immunohistochemistry of paraffin-embedded mouse spleen using RPS6KA1 antibody (CAB15718) at dilution of 1:100 (40x lens).



Immunofluorescence analysis of L929 cells using RPS6KA1 antibody (CAB15718) at dilution of 1:100. Blue: DAPI for nuclear staining.



Immunofluorescence analysis of U-2 OS cells using RPS6KA1 antibody (CAB15718) at dilution of 1:100. Blue: DAPI for nuclear staining.