

# p70 S6 kinase Rabbit Polyclonal Antibody



CAB15719

## Product Information

### Size:

20uL, 50uL, 100uL, 200uL

### Observed MW:

### Calculated MW:

51kDa/52kDa/56kDa/59kDa

### Applications:

WB IHC IF

### Reactivity:

Human, Rat

## Antibody Information

### Recommended dilutions:

WB 1:500 - 1:2000 IHC 1:50  
- 1:100 IF 1:50 - 1:100

### Source:

Rabbit

### Isotype:

IgG

### Purification:

Affinity purification

## Protein Background

This gene encodes a member of the ribosomal S6 kinase family of serine/threonine kinases. The encoded protein responds to mTOR (mammalian target of rapamycin) signaling to promote protein synthesis, cell growth, and cell proliferation. Activity of this gene has been associated with human cancer. Alternatively spliced transcript variants have been observed. The use of alternative translation start sites results in isoforms with longer or shorter N-termini which may differ in their subcellular localizations. There are two pseudogenes for this gene on chromosome 17.

## Immunogen information

### Gene ID:

6198

### Uniprot

P23443

### Synonyms:

PS6K; S6K; S6K-beta-1; S6K1; STK14A; p70 S6KA; p70(S6K)-alpha;  
p70-S6K; p70-alpha; P70 S6K; RPS6KB1; p70S6KA

### Immunogen:

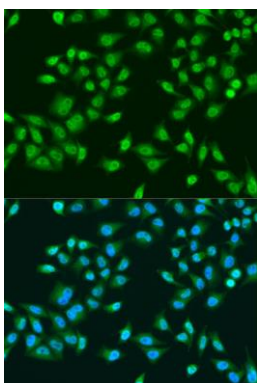
Recombinant fusion protein containing a sequence corresponding to amino acids 361-525 of human RPS6KB1 (NP\_003152.1).

### Storage:

Store at -20°C. Avoid freeze / thaw cycles. Buffer: PBS with 0.02% sodium azide, 50% glycerol, pH7.3.

## Product Images

---



Immunofluorescence analysis of U2OS cells using p70 S6 kinase antibody (CAB15719) at dilution of 1:100. Blue: DAPI for nuclear staining.