

# A2M Rabbit Polyclonal Antibody



CAB1573

---

## Product Information

### Size:

20uL, 50uL, 100uL, 200uL

### Observed MW:

160kDa

### Calculated MW:

163kDa

### Applications:

WB IF

### Reactivity:

Human, Mouse, Rat

## Protein Background

Alpha-2-macroglobulin is a protease inhibitor and cytokine transporter. It inhibits many proteases, including trypsin, thrombin and collagenase. A2M is implicated in Alzheimer disease (AD) due to its ability to mediate the clearance and degradation of A-beta, the major component of beta-amyloid deposits.

## Immunogen information

### Gene ID:

2

### Uniprot

P01023

### Synonyms:

A2M; A2MD; CPAMD5; FWP007; S863-7

## Antibody Information

### Recommended dilutions:

WB 1:500 - 1:2000 IF 1:50 - 1:200

### Source:

Rabbit

### Isotype:

IgG

### Purification:

Affinity purification

### Immunogen:

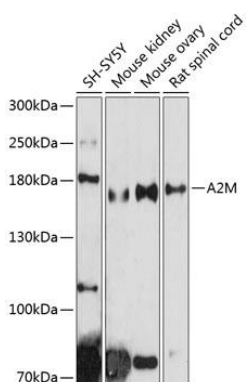
Recombinant fusion protein containing a sequence corresponding to amino acids 1155-1474 of human A2M (NP\_000005.2).

### Storage:

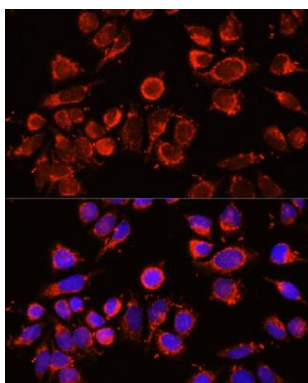
Store at -20°C. Avoid freeze / thaw cycles. Buffer: PBS with 0.02% sodium azide, 50% glycerol, pH7.3.

## Product Images

---



Western blot analysis of extracts of various cell lines, using A2M antibody (CAB1573) at 1:500 dilution. Secondary antibody: HRP Goat Anti-Rabbit IgG (H+L) (CABS014) at 1:10000 dilution. Lysates/proteins: 25ug per lane. Blocking buffer: 3% nonfat dry milk in TBST. Detection: ECL Basic Kit (CABM00020). Exposure time: 60s.



Immunofluorescence analysis of 293T cells using A2M antibody (CAB1573) at dilution of 1:100 (40x lens). Blue: DAPI for nuclear staining.