

# TCHH Rabbit Polyclonal Antibody



CAB15731

---

## Product Information

### Size:

20uL, 50uL, 100uL, 200uL

### Observed MW:

280kDa

### Calculated MW:

253kDa

### Applications:

WB IHC IF

### Reactivity:

Human, Mouse, Rat

## Protein Background

The protein encoded by this gene forms crosslinked complexes with itself and keratin intermediate filaments to provide mechanical strength to the hair follicle inner root sheath. The encoded protein also is important for structural integrity of the filiform papillae of the tongue. Defects in this gene are a cause of uncombable hair syndrome.

## Immunogen information

### Gene ID:

7062

### Uniprot

Q07283

### Synonyms:

TCHH; THH; THL; TRHY; UHS3

## Antibody Information

### Recommended dilutions:

WB 1:500 - 1:2000 IHC 1:50  
- 1:100 IF 1:50 - 1:100

### Source:

Rabbit

### Isotype:

IgG

### Purification:

Affinity purification

### Immunogen:

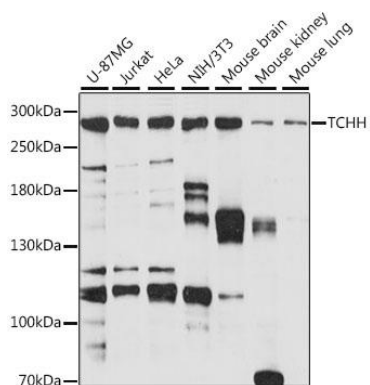
Recombinant fusion protein containing a sequence corresponding to amino acids 100-300 of human TCHH (NP\_009044.2).

### Storage:

Store at -20°C. Avoid freeze / thaw cycles. Buffer: PBS with 0.02% sodium azide, 50% glycerol, pH7.3.

## Product Images

---



Western blot analysis of extracts of various cell lines, using TCHH antibody (CAB15731) at 1:1000 dilution. Secondary antibody: HRP Goat Anti-Rabbit IgG (H+L) (CABS014) at 1:10000 dilution. Lysates/proteins: 25ug per lane. Blocking buffer: 3% nonfat dry milk in TBST. Detection: ECL Basic Kit (CABM00020). Exposure time: 60s.