

TPI1 Rabbit Polyclonal Antibody



CAB15733

Product Information

Size:

20uL, 50uL, 100uL, 200uL

Observed MW:

30kDa

Calculated MW:

17kDa/26kDa/30kDa

Applications:

WB IHC IF

Reactivity:

Human, Mouse, Rat

Protein Background

This gene encodes an enzyme, consisting of two identical proteins, which catalyzes the isomerization of glyceraldehydes 3-phosphate (G3P) and dihydroxy-acetone phosphate (DHAP) in glycolysis and gluconeogenesis. Mutations in this gene are associated with triosephosphate isomerase deficiency. Pseudogenes have been identified on chromosomes 1, 4, 6 and 7. Alternative splicing results in multiple transcript variants.

Immunogen information

Gene ID:

7167

Uniprot

P60174

Synonyms:

TPI1; HEL-S-49; TIM; TPI; TPID

Antibody Information

Recommended dilutions:

WB 1:500 - 1:2000 IHC

1:100 - 1:200 IF 1:50 -

1:200

Source:

Rabbit

Isotype:

IgG

Purification:

Affinity purification

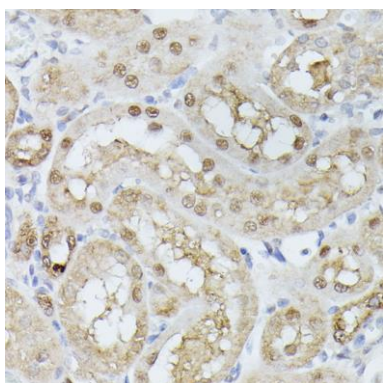
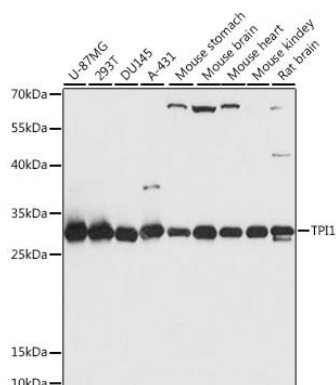
Immunogen:

Recombinant fusion protein containing a sequence corresponding to amino acids 1-249 of human TPI1 (NP_000356.1).

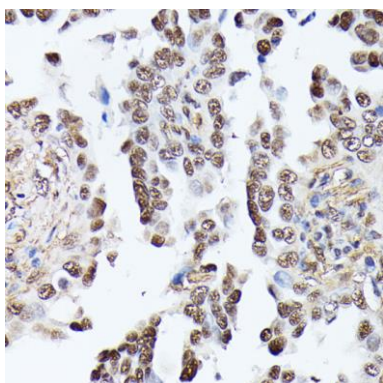
Storage:

Store at -20°C. Avoid freeze / thaw cycles. Buffer: PBS with 0.02% sodium azide, 50% glycerol, pH7.3.

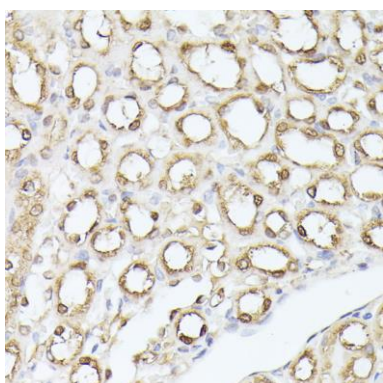
Product Images



Immunohistochemistry of paraffin-embedded rat kidney using TPI1 antibody (CAB15733) at dilution of 1:100 (40x lens).



Immunohistochemistry of paraffin-embedded human lung cancer using TPI1 antibody (CAB15733) at dilution of 1:100 (40x lens).



Immunohistochemistry of paraffin-embedded mouse kidney using TPI1 antibody (CAB15733) at dilution of 1:100 (40x lens).