

# ZIC2 Rabbit Polyclonal Antibody



CAB15736

---

## Product Information

**Size:**

20uL, 50uL, 100uL, 200uL

**Observed MW:**

50kDa

**Calculated MW:**

55kDa

**Applications:**

WB

**Reactivity:**

Mouse, Rat

## Antibody Information

**Recommended dilutions:**

WB 1:500 - 1:2000

**Source:**

Rabbit

**Isotype:**

IgG

**Purification:**

Affinity purification

## Protein Background

This gene encodes a member of the ZIC family of C2H2-type zinc finger proteins. This protein functions as a transcriptional repressor and may regulate tissue specific expression of dopamine receptor D1. Expansion of an alanine repeat in the C-terminus of the encoded protein and other mutations in this gene cause holoprosencephaly type 5. Holoprosencephaly is the most common structural anomaly of the human brain. A polyhistidine tract polymorphism in this gene may be associated with increased risk of neural tube defects. This gene is closely linked to a gene encoding zinc finger protein of the cerebellum 5, a related family member on chromosome 13.

## Immunogen information

**Gene ID:**

7546

**Uniprot**

O95409

**Synonyms:**

ZIC2; HPE5

**Immunogen:**

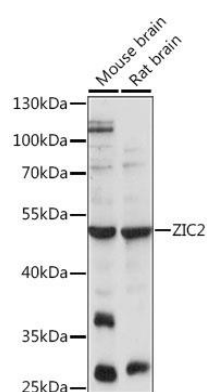
Recombinant fusion protein containing a sequence corresponding to amino acids 1-220 of human ZIC2 (NP\_009060.2).

**Storage:**

Store at -20°C. Avoid freeze / thaw cycles. Buffer: PBS with 0.02% sodium azide, 50% glycerol, pH7.3.

## Product Images

---



Western blot analysis of extracts of various cell lines, using ZIC2 antibody (CAB15736) at 1:1000 dilution. Secondary antibody: HRP Goat Anti-Rabbit IgG (H+L) (CABS014) at 1:10000 dilution. Lysates/proteins: 25ug per lane. Blocking buffer: 3% nonfat dry milk in TBST. Detection: ECL Enhanced Kit (CABM00021). Exposure time: 30s.