

LRRFIP1 Rabbit Polyclonal Antibody



CAB15752

Product Information

Size:

20uL, 50uL, 100uL, 200uL

Observed MW:

70kDa

Calculated MW:

73kDa/82kDa/86kDa/89kDa

Applications:

WB

Reactivity:

Human

Antibody Information

Recommended dilutions:

WB 1:500 - 1:2000

Source:

Rabbit

Isotype:

IgG

Purification:

Affinity purification

Protein Background

Immunogen information

Gene ID:

9208

Uniprot

Q32MZ4

Synonyms:

LRRFIP1; FLAP-1; FLAP1; FLIAP1; GCF-2; GCF2; HUPI-1; TRIP

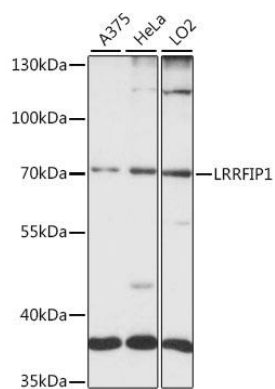
Immunogen:

Recombinant fusion protein containing a sequence corresponding to amino acids 589-808 of human LRRFIP1 (NP_001131024.1).

Storage:

Store at -20°C. Avoid freeze / thaw cycles. Buffer: PBS with 0.02% sodium azide, 50% glycerol, pH7.3.

Product Images



Western blot analysis of extracts of various cell lines, using LRRFIP1 antibody (CAB15752) at 1:1000 dilution. Secondary antibody: HRP Goat Anti-Rabbit IgG (H+L) (CABS014) at 1:10000 dilution. Lysates/proteins: 25ug per lane. Blocking buffer: 3% nonfat dry milk in TBST. Detection: ECL Basic Kit (CABM00020). Exposure time: 10s.