

MED20 Rabbit Polyclonal Antibody



CAB15757

Product Information

Size:

20uL, 50uL, 100uL, 200uL

Observed MW:

24kDa

Calculated MW:

13kDa/23kDa

Applications:

WB

Reactivity:

Human, Mouse, Rat

Antibody Information

Recommended dilutions:

WB 1:500 - 1:2000

Source:

Rabbit

Isotype:

IgG

Purification:

Affinity purification

Protein Background

This gene encodes a component of the mediator complex (also known as TRAP, SMCC, DRIP, or ARC), a transcriptional coactivator complex thought to be required for the expression of almost all genes. The mediator complex is recruited by transcriptional activators or nuclear receptors to induce gene expression, by interacting with RNA polymerase II and promoting the formation of a transcriptional pre-initiation complex. A mutation in this gene has been associated with a novel infantile-onset neurodegenerative movement disorder. Alternatively spliced transcript variants have been identified.

Immunogen information

Gene ID:

9477

Uniprot

Q9H944

Synonyms:

MED20; PRO0213; TRFP; SRB2

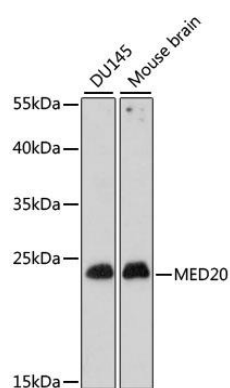
Immunogen:

Recombinant fusion protein containing a sequence corresponding to amino acids 1-212 of human MED20 (NP_004266.2).

Storage:

Store at -20°C. Avoid freeze / thaw cycles. Buffer: PBS with 0.02% sodium azide, 50% glycerol, pH7.3.

Product Images



Western blot analysis of extracts of various cell lines, using MED20 antibody (CAB15757) at 1:1000 dilution. Secondary antibody: HRP Goat Anti-Rabbit IgG (H+L) (CABS014) at 1:10000 dilution. Lysates/proteins: 25ug per lane. Blocking buffer: 3% nonfat dry milk in TBST. Detection: ECL Basic Kit (CABM00020). Exposure time: 90s.