

# SOX13 Rabbit Polyclonal Antibody



CAB15759

---

## Product Information

### Size:

20uL, 50uL, 100uL, 200uL

### Observed MW:

114kDa

### Calculated MW:

69kDa

### Applications:

WB

### Reactivity:

Human

## Protein Background

This gene encodes a member of the SOX (SRY-related HMG-box) family of transcription factors involved in the regulation of embryonic development and in the determination of cell fate. The encoded protein may act as a transcriptional regulator after forming a protein complex with other proteins. It has also been determined to be a type-1 diabetes autoantigen, also known as islet cell antibody 12.

## Immunogen information

### Gene ID:

9580

### Uniprot

Q9UN79

### Synonyms:

SOX13; ICA12; Sox-13

## Antibody Information

### Recommended dilutions:

WB 1:500 - 1:2000

### Source:

Rabbit

### Isotype:

IgG

### Purification:

Affinity purification

### Immunogen:

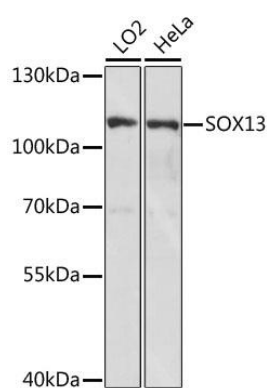
Recombinant fusion protein containing a sequence corresponding to amino acids 1-180 of human SOX13 (NP\_005677.2).

### Storage:

Store at -20°C. Avoid freeze / thaw cycles. Buffer: PBS with 0.02% sodium azide, 50% glycerol, pH7.3.

## Product Images

---



Western blot analysis of extracts of various cell lines, using SOX13 antibody (CAB15759) at 1:1000 dilution. Secondary antibody: HRP Goat Anti-Rabbit IgG (H+L) (CABS014) at 1:10000 dilution. Lysates/proteins: 25ug per lane. Blocking buffer: 3% nonfat dry milk in TBST. Detection: ECL Basic Kit (CABM00020). Exposure time: 30s.