

BTK Rabbit Polyclonal Antibody



CAB1576

Product Information

Size:

20uL, 50uL, 100uL, 200uL

Observed MW:

Refer to Figures

Calculated MW:

76kDa/79kDa

Applications:

WB IHC IF

Reactivity:

Human, Mouse, Rat

Protein Background

The protein encoded by this gene plays a crucial role in B-cell development. Mutations in this gene cause X-linked agammaglobulinemia type 1, which is an immunodeficiency characterized by the failure to produce mature B lymphocytes, and associated with a failure of Ig heavy chain rearrangement. Alternative splicing results in multiple transcript variants encoding different isoforms.

Immunogen information

Gene ID:

695

Uniprot

Q06187

Synonyms:

AGMX1; AT; ATK; BPK; IMD1; PSCTK1; XLA; BTK

Antibody Information

Recommended dilutions:

WB 1:500 - 1:2000 IHC 1:50
- 1:100 IF 1:50 - 1:100

Source:

Rabbit

Isotype:

IgG

Purification:

Affinity purification

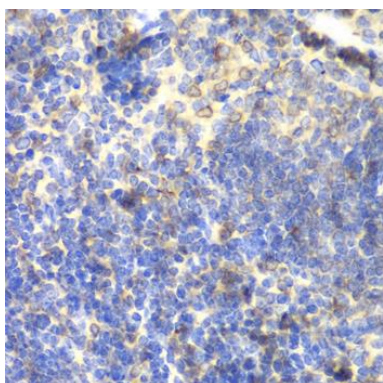
Immunogen:

Recombinant fusion protein containing a sequence corresponding to amino acids 30-240 of human BTK (NP_000052.1).

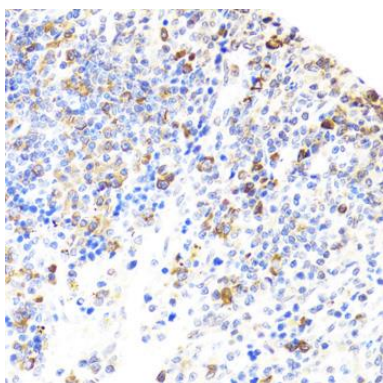
Storage:

Store at -20°C. Avoid freeze / thaw cycles. Buffer: PBS with 0.02% sodium azide, 50% glycerol, pH7.3.

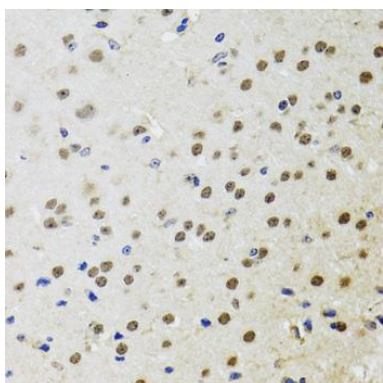
Product Images



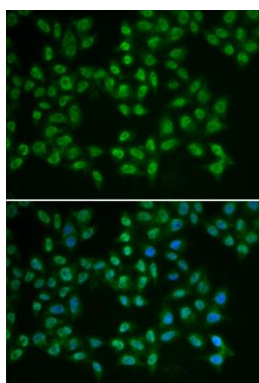
Immunohistochemistry of paraffin-embedded mouse spleen using BTK antibody (CAB1576) at dilution of 1:100 (40x lens).



Immunohistochemistry of paraffin-embedded rat spleen using BTK antibody (CAB1576) at dilution of 1:100 (40x lens).



Immunohistochemistry of paraffin-embedded mouse brain using BTK antibody (CAB1576) at dilution of 1:100 (40x lens).



Immunofluorescence analysis of HeLa cells using BTK antibody (CAB1576). Blue: DAPI for nuclear staining.