

# RBM39 Rabbit Polyclonal Antibody



CAB15760

---

## Product Information

### Size:

20uL, 50uL, 100uL, 200uL

### Observed MW:

70kDa

### Calculated MW:

57kDa/58kDa/59kDa

### Applications:

WB IHC IF

### Reactivity:

Human, Mouse, Rat

## Protein Background

This gene encodes a member of the U2AF65 family of proteins. The encoded protein is found in the nucleus, where it co-localizes with core spliceosomal proteins. It has been shown to play a role in both steroid hormone receptor-mediated transcription and alternative splicing, and it is also a transcriptional coregulator of the viral oncoprotein v-Rel. Multiple transcript variants have been observed for this gene. A related pseudogene has been identified on chromosome X.

## Immunogen information

### Gene ID:

9584

### Uniprot

Q14498

### Synonyms:

RBM39; CAPER; CAPERalpha; FSAP59; HCC1; RNPC2

## Antibody Information

### Recommended dilutions:

WB 1:500 - 1:2000 IHC 1:50  
- 1:200 IF 1:50 - 1:200

### Source:

Rabbit

### Isotype:

IgG

### Purification:

Affinity purification

### Immunogen:

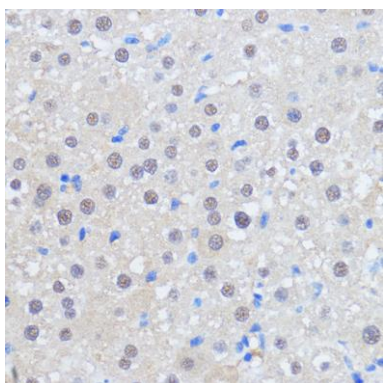
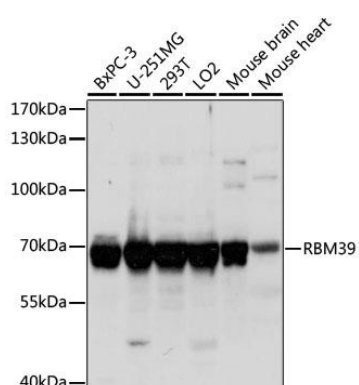
A synthetic peptide corresponding to a sequence within amino acids 400 to the C-terminus of human RBM39 (NP\_001229528.1).

### Storage:

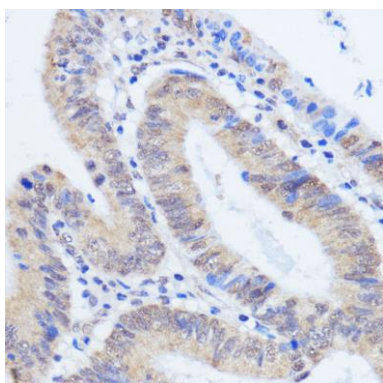
Store at -20°C. Avoid freeze / thaw cycles. Buffer: PBS with 0.02% sodium azide, 50% glycerol, pH7.3.

## Product Images

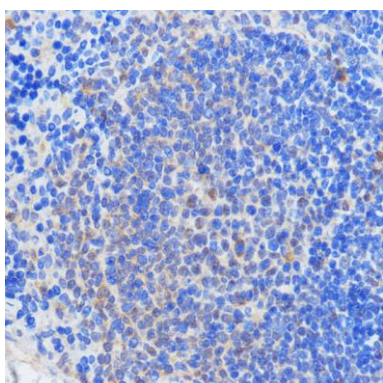
---



Immunohistochemistry of paraffin-embedded rat liver using RBM39 antibody (CAB15760) at dilution of 1:100 (40x lens).



Immunohistochemistry of paraffin-embedded human colon carcinoma using RBM39 antibody (CAB15760) at dilution of 1:100 (40x lens).



Immunohistochemistry of paraffin-embedded mouse spleen using RBM39 antibody (CAB15760) at dilution of 1:100 (40x lens).