

CLSTN3 Rabbit Polyclonal Antibody



CAB15765

Product Information

Size:

20uL, 50uL, 100uL, 200uL

Observed MW:

105kDa

Calculated MW:

106kDa/107kDa

Applications:

WB

Reactivity:

Mouse

Antibody Information

Recommended dilutions:

WB 1:500 - 1:2000

Source:

Rabbit

Isotype:

IgG

Purification:

Affinity purification

Protein Background

Immunogen information

Gene ID:

9746

Uniprot

Q9BQT9

Synonyms:

CLSTN3; CDHR14; CSTN3; alcbeta

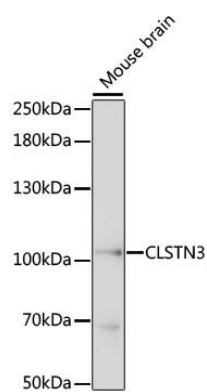
Immunogen:

Recombinant fusion protein containing a sequence corresponding to amino acids 730-850 of human CLSTN3 (NP_055533.2).

Storage:

Store at -20°C. Avoid freeze / thaw cycles. Buffer: PBS with 0.02% sodium azide, 50% glycerol, pH7.3.

Product Images



Western blot analysis of extracts of mouse brain, using CLSTN3 antibody (CAB15765) at 1:1000 dilution. Secondary antibody: HRP Goat Anti-Rabbit IgG (H+L) (CABS014) at 1:10000 dilution. Lysates/proteins: 25ug per lane. Blocking buffer: 3% nonfat dry milk in TBST. Detection: ECL Basic Kit (CABM00020). Exposure time: 30s.