

GOLGA5 Rabbit Polyclonal Antibody



CAB15768

Product Information

Size:

20uL, 50uL, 100uL, 200uL

Observed MW:

100kDa, 115kDa

Calculated MW:

78kDa/83kDa

Applications:

WB IF

Reactivity:

Human, Mouse, Rat

Antibody Information

Recommended dilutions:

WB 1:500 - 1:2000 IF 1:50 - 1:200

Source:

Rabbit

Isotype:

IgG

Purification:

Affinity purification

Protein Background

The Golgi apparatus, which participates in glycosylation and transport of proteins and lipids in the secretory pathway, consists of a series of stacked cisternae (flattened membrane sacs). Interactions between the Golgi and microtubules are thought to be important for the reorganization of the Golgi after it fragments during mitosis. This gene encodes one of the golgins, a family of proteins localized to the Golgi. This protein is a coiled-coil membrane protein that has been postulated to play a role in vesicle tethering and docking. Translocations involving this gene and the ret proto-oncogene have been found in tumor tissues; the chimeric sequences have been designated RET-II and PTC5. A pseudogene of this gene is located on the short arm of chromosome 5.

Immunogen information

Gene ID:

9950

Uniprot

Q8TBA6

Synonyms:

GOLGA5; GOLIM5; RFG5; ret-II; golgin A5

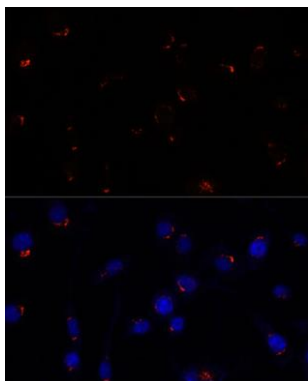
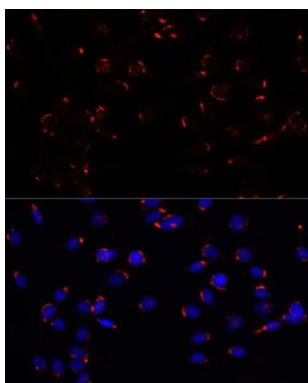
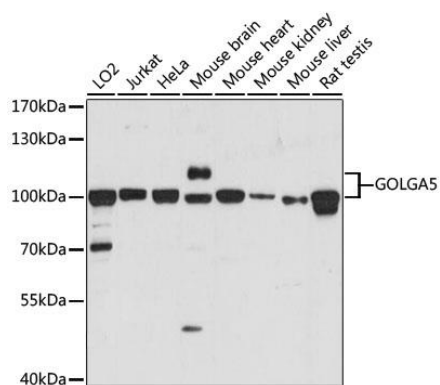
Immunogen:

Recombinant fusion protein containing a sequence corresponding to amino acids 1-300 of human GOLGA5 (NP_005104.3).

Storage:

Store at -20°C. Avoid freeze / thaw cycles. Buffer: PBS with 0.02% sodium azide, 50% glycerol, pH7.3.

Product Images



Western blot analysis of extracts of various cell lines, using GOLGA5 antibody (CAB15768) at 1:1000 dilution. Secondary antibody: HRP Goat Anti-Rabbit IgG (H+L) (CABS014) at 1:10000 dilution. Lysates/proteins: 25ug per lane. Blocking buffer: 3% nonfat dry milk in TBST. Detection: ECL Basic Kit (CABM00020). Exposure time: 60s.

Immunofluorescence analysis of C6 cells using GOLGA5 antibody (CAB15768) at dilution of 1:100. Blue: DAPI for nuclear staining.

Immunofluorescence analysis of L929 cells using GOLGA5 antibody (CAB15768) at dilution of 1:100. Blue: DAPI for nuclear staining.