

# SIN3A Rabbit Polyclonal Antibody



CAB1577

---

## Product Information

### Size:

20uL, 50uL, 100uL, 200uL

### Observed MW:

165kDa

### Calculated MW:

145kDa

### Applications:

WB IF IP ChIP

### Reactivity:

Human, Mouse

## Protein Background

The protein encoded by this gene is a transcriptional regulatory protein. It contains paired amphipathic helix (PAH) domains, which are important for protein-protein interactions and may mediate repression by the Mad-Max complex.

## Immunogen information

### Gene ID:

25942

### Uniprot

Q96ST3

### Synonyms:

SIN3A; WITKOS

## Antibody Information

### Recommended dilutions:

WB 1:500 - 1:2000 IF 1:50 -  
1:200 IP 1:50 - 1:100 ChIP  
1:20 - 1:100

### Source:

Rabbit

### Isotype:

IgG

### Purification:

Affinity purification

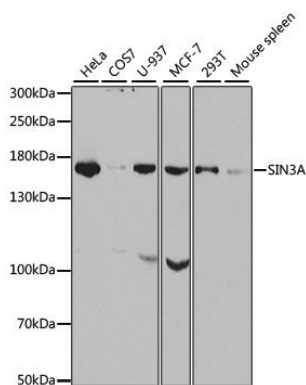
### Immunogen:

Recombinant fusion protein containing a sequence corresponding to amino acids 1-120 of human SIN3A (NP\_056292.1).

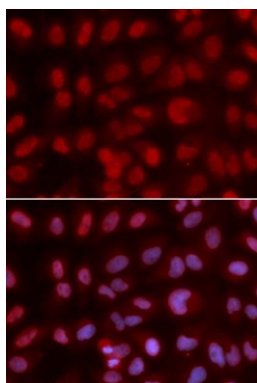
### Storage:

Store at -20°C. Avoid freeze / thaw cycles. Buffer: PBS with 0.02% sodium azide, 50% glycerol, pH7.3.

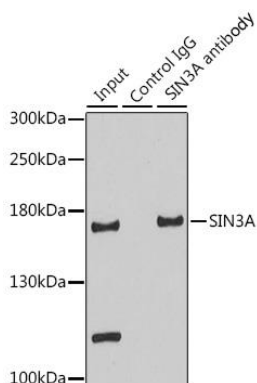
## Product Images



Western blot analysis of extracts of various cell lines, using SIN3A antibody (CAB1577) at 1:1000 dilution. Secondary antibody: HRP Goat Anti-Rabbit IgG (H+L) (CABS014) at 1:10000 dilution. Lysates/proteins: 25ug per lane. Blocking buffer: 3% nonfat dry milk in TBST.



Immunofluorescence analysis of U2OS cells using SIN3A antibody (CAB1577). Blue: DAPI for nuclear staining.



Immunoprecipitation analysis of 200ug extracts of HeLa cells using 3ug SIN3A antibody (CAB1577). Western blot was performed from the immunoprecipitate using SIN3A antibody (CAB1577) at a dilution of 1:500.