

EDIL3 Rabbit Polyclonal Antibody



CAB15772

Product Information

Size:

20uL, 50uL, 100uL, 200uL

Observed MW:

52kDa

Calculated MW:

52kDa/53kDa

Applications:

WB IF

Reactivity:

Human, Mouse

Protein Background

The protein encoded by this gene is an integrin ligand. It plays an important role in mediating angiogenesis and may be important in vessel wall remodeling and development. It also influences endothelial cell behavior.

Immunogen information

Gene ID:

10085

Uniprot

O43854

Synonyms:

EDIL3; DEL1

Antibody Information

Recommended dilutions:

WB 1:500 - 1:2000 IF 1:50 - 1:200

Source:

Rabbit

Isotype:

IgG

Purification:

Affinity purification

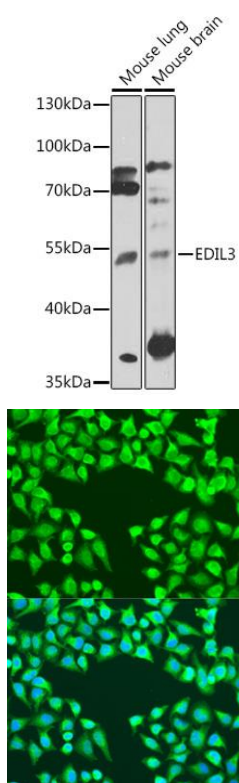
Immunogen:

A synthetic peptide corresponding to a sequence within amino acids 350-450 of human EDIL3 (NP_005702.3).

Storage:

Store at -20°C. Avoid freeze / thaw cycles. Buffer: PBS with 0.02% sodium azide, 50% glycerol, pH7.3.

Product Images



Western blot analysis of extracts of various cell lines, using EDIL3 antibody (CAB15772) at 1:1000 dilution. Secondary antibody: HRP Goat Anti-Rabbit IgG (H+L) (CABS014) at 1:10000 dilution. Lysates/proteins: 25ug per lane. Blocking buffer: 3% nonfat dry milk in TBST. Detection: ECL Enhanced Kit (CABM00021). Exposure time: 30s.

Immunofluorescence analysis of U2OS cells using EDIL3 antibody (CAB15772) at dilution of 1:100. Blue: DAPI for nuclear staining.