

UNC13B Rabbit Polyclonal Antibody



CAB15780

Product Information

Size:

20uL, 50uL, 100uL, 200uL

Observed MW:

210kDa

Calculated MW:

180kDa/182kDa

Applications:

WB IHC IF

Reactivity:

Human, Mouse

Protein Background

This gene is expressed in the kidney cortical epithelial cells and is upregulated by hyperglycemia. The encoded protein shares a high level of similarity to the rat homolog, and contains 3 C2 domains and a diacylglycerol-binding C1 domain. Hyperglycemia increases the levels of diacylglycerol, which has been shown to induce apoptosis in cells transfected with this gene and thus contribute to the renal cell complications of hyperglycemia. Studies in other species also indicate a role for this protein in the priming step of synaptic vesicle exocytosis.

Immunogen information

Gene ID:

10497

Uniprot

O14795

Synonyms:

UNC13B; MUNC13; UNC13; Unc13h2

Antibody Information

Recommended dilutions:

WB 1:500 - 1:2000 IHC 1:50
- 1:200 IF 1:50 - 1:200

Source:

Rabbit

Isotype:

IgG

Purification:

Affinity purification

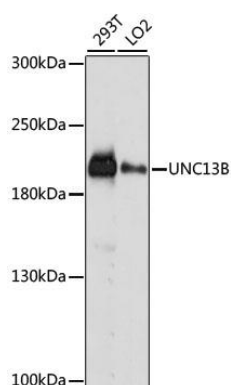
Immunogen:

Recombinant fusion protein containing a sequence corresponding to amino acids 1-350 of human UNC13B (NP_006368.3).

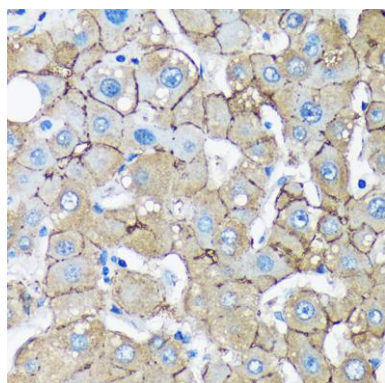
Storage:

Store at -20°C. Avoid freeze / thaw cycles. Buffer: PBS with 0.02% sodium azide, 50% glycerol, pH7.3.

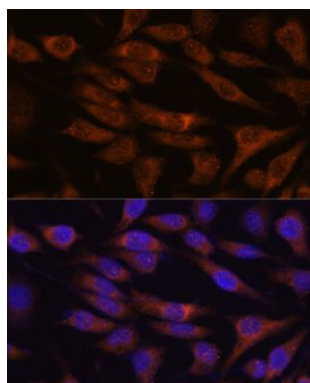
Product Images



Western blot analysis of extracts of various cell lines, using UNC13B antibody (CAB15780) at 1:1000 dilution. Secondary antibody: HRP Goat Anti-Rabbit IgG (H+L) (CABS014) at 1:10000 dilution. Lysates/proteins: 25ug per lane. Blocking buffer: 3% nonfat dry milk in TBST. Detection: ECL Basic Kit (CABM00020). Exposure time: 10s.



Immunohistochemistry of paraffin-embedded Human liver using UNC13B Rabbit pAb (CAB15780) at dilution of 1:100 (40x lens).



Immunofluorescence analysis of L929 cells using UNC13B antibody (CAB15780) at dilution of 1:100. Blue: DAPI for nuclear staining.