

# APPBP2 Rabbit Polyclonal Antibody



CAB15781

---

## Product Information

### Size:

20uL, 50uL, 100uL, 200uL

### Observed MW:

67kDa, 71kDa, 80kDa

### Calculated MW:

66kDa

### Applications:

WB

### Reactivity:

Human, Mouse, Rat

## Protein Background

The protein encoded by this gene interacts with microtubules and is functionally associated with beta-amyloid precursor protein transport and/or processing. The beta-amyloid precursor protein is a cell surface protein with signal-transducing properties, and it is thought to play a role in the pathogenesis of Alzheimer's disease. The encoded protein may be involved in regulating cell death. This gene has been found to be highly expressed in breast cancer. Alternative splicing results in multiple transcript variants.

## Immunogen information

### Gene ID:

10513

### Uniprot

Q92624

### Synonyms:

APPBP2; APP-BP2; HS.84084; PAT1

## Antibody Information

### Recommended dilutions:

WB 1:500 - 1:2000

### Source:

Rabbit

### Isotype:

IgG

### Purification:

Affinity purification

### Immunogen:

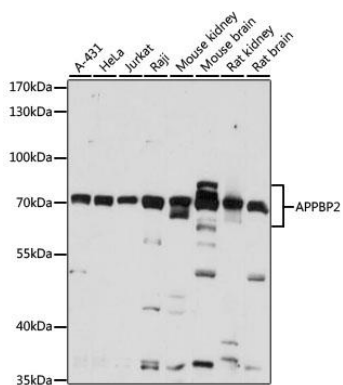
Recombinant fusion protein containing a sequence corresponding to amino acids 386-585 of human APPBP2 (NP\_006371.2).

### Storage:

Store at -20°C. Avoid freeze / thaw cycles. Buffer: PBS with 0.02% sodium azide, 50% glycerol, pH7.3.

## Product Images

---



Western blot analysis of extracts of various cell lines, using APPBP2 antibody (CAB15781) at 1:1000 dilution. Secondary antibody: HRP Goat Anti-Rabbit IgG (H+L) (CABS014) at 1:10000 dilution. Lysates/proteins: 25ug per lane. Blocking buffer: 3% nonfat dry milk in TBST. Detection: ECL Basic Kit (CABM00020). Exposure time: 35s.