

KIF1C Rabbit Polyclonal Antibody



CAB15786

Product Information

Size:

20uL, 50uL, 100uL, 200uL

Observed MW:

165kDa

Calculated MW:

122kDa

Applications:

WB IHC

Reactivity:

Human, Mouse, Rat

Protein Background

The protein encoded by this gene is a member of the kinesin-like protein family. The family members are microtubule-dependent molecular motors that transport organelles within cells and move chromosomes during cell division. Mutations in this gene are a cause of spastic ataxia 2, autosomal recessive.

Immunogen information

Gene ID:

10749

Uniprot

O43896

Synonyms:

KIF1C; LTXS1; SATX2; SAX2; SPAX2; SPG58

Antibody Information

Recommended dilutions:

WB 1:500 - 1:2000 IHC 1:50
- 1:200

Source:

Rabbit

Isotype:

IgG

Purification:

Affinity purification

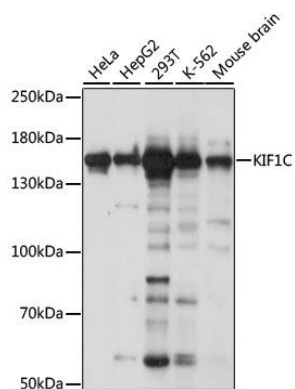
Immunogen:

Recombinant fusion protein containing a sequence corresponding to amino acids 810-960 of human KIF1C (NP_006603.2).

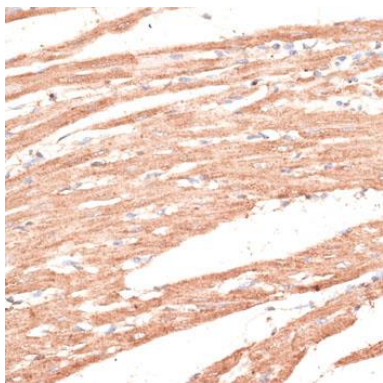
Storage:

Store at -20°C. Avoid freeze / thaw cycles. Buffer: PBS with 0.02% sodium azide, 50% glycerol, pH7.3.

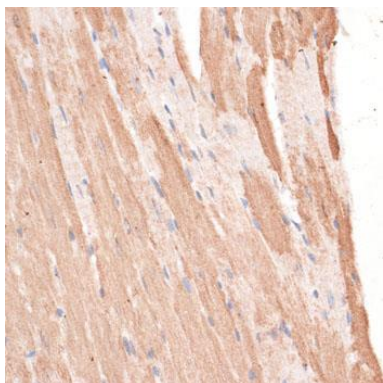
Product Images



Western blot analysis of extracts of various cell lines, using KIF1C antibody (CAB15786) at 1:1000 dilution. Secondary antibody: HRP Goat Anti-Rabbit IgG (H+L) (CABS014) at 1:10000 dilution. Lysates/proteins: 25ug per lane. Blocking buffer: 3% nonfat dry milk in TBST. Detection: ECL Basic Kit (CABM00020). Exposure time: 5s.



Immunohistochemistry of paraffin-embedded rat heart using KIF1C antibody (CAB15786) at dilution of 1:100 (40x lens).



Immunohistochemistry of paraffin-embedded mouse heart using KIF1C antibody (CAB15786) at dilution of 1:100 (40x lens).