

# LYPLA2 Rabbit Polyclonal Antibody



CAB15792

---

## Product Information

### Size:

20uL, 50uL, 100uL, 200uL

### Observed MW:

25kDa

### Calculated MW:

24kDa

### Applications:

WB

### Reactivity:

Human, Mouse, Rat

## Protein Background

Lysophospholipases are enzymes that act on biological membranes to regulate the multifunctional lysophospholipids. There are alternatively spliced transcript variants described for this gene but the full length nature is not known yet.

## Immunogen information

### Gene ID:

11313

### Uniprot

O95372

### Synonyms:

LYPLA2; APT-2; APT2; DJ886K2.4

## Antibody Information

### Recommended dilutions:

WB 1:500 - 1:2000

### Source:

Rabbit

### Isotype:

IgG

### Purification:

Affinity purification

### Immunogen:

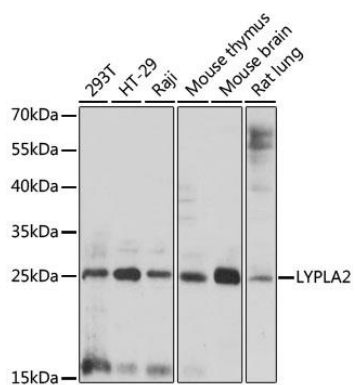
Recombinant fusion protein containing a sequence corresponding to amino acids 147-231 of human LYPLA2 (NP\_009191.1).

### Storage:

Store at -20°C. Avoid freeze / thaw cycles. Buffer: PBS with 0.02% sodium azide, 50% glycerol, pH7.3.

## Product Images

---



Western blot analysis of extracts of various cell lines, using LYPLA2 antibody (CAB15792) at 1:1000 dilution. Secondary antibody: HRP Goat Anti-Rabbit IgG (H+L) (CABS014) at 1:10000 dilution. Lysates/proteins: 25ug per lane. Blocking buffer: 3% nonfat dry milk in TBST. Detection: ECL Enhanced Kit (CABM00021). Exposure time: 90s.