

[KO Validated] KDM1 Rabbit Polyclonal Antibody



CAB15794

Product Information

Size:

20uL, 50uL, 100uL, 200uL

Observed MW:

110kDa

Calculated MW:

92kDa/95kDa

Applications:

WB IHC IF

Reactivity:

Human, Mouse, Rat

Protein Background

This gene encodes a nuclear protein containing a SWIRM domain, a FAD-binding motif, and an amine oxidase domain. This protein is a component of several histone deacetylase complexes, though it silences genes by functioning as a histone demethylase. Alternative splicing results in multiple transcript variants.

Immunogen information

Gene ID:

23028

Uniprot

O60341

Synonyms:

KDM1A; AOF2; BHC110; CPRF; KDM1; LSD1; KDM1

Antibody Information

Recommended dilutions:

WB 1:500 - 1:2000 IHC 1:50
- 1:100 IF 1:50 - 1:100

Source:

Rabbit

Isotype:

IgG

Purification:

Affinity purification

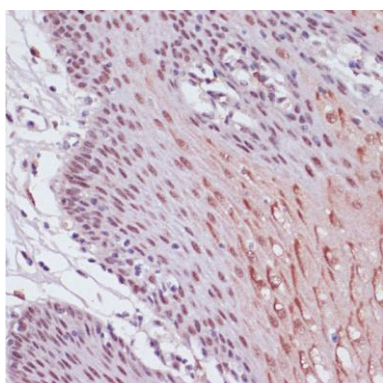
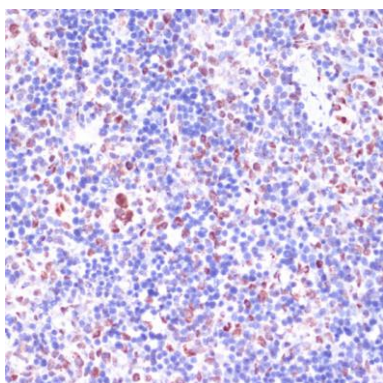
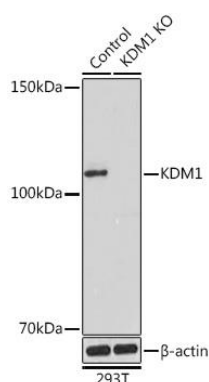
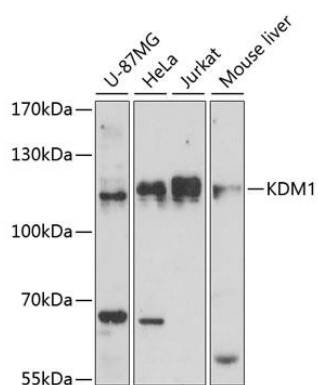
Immunogen:

Recombinant fusion protein containing a sequence corresponding to amino acids 130-380 of human KDM1 (NP_055828.2).

Storage:

Store at -20°C. Avoid freeze / thaw cycles. Buffer: PBS with 0.02% sodium azide, 50% glycerol, pH7.3.

Product Images



Western blot analysis of extracts of various cell lines, using KDM1 antibody (CAB15794) at 1:1000 dilution. Secondary antibody: HRP Goat Anti-Rabbit IgG (H+L) (CABS014) at 1:10000 dilution. Lysates/proteins: 25ug per lane. Blocking buffer: 3% nonfat dry milk in TBST. Detection: ECL Basic Kit (CABM00020). Exposure time: 90s.

Western blot analysis of extracts from normal (control) and KDM1 Rabbit pAb knockout (KO) 293T cells, using KDM1 Rabbit pAb antibody (CAB15794) at 1:1000 dilution. Secondary antibody: HRP Goat Anti-Rabbit IgG (H+L) (CABS014) at 1:10000 dilution. Lysates/proteins: 25ug per lane. Blocking buffer: 3% nonfat dry milk in TBST. Detection: ECL Basic Kit (CABM00020). Exposure time: 180s.

Immunohistochemistry of paraffin-embedded rat spleen using KDM1 antibody (CAB15794) at dilution of 1:100 (40x lens).

Immunohistochemistry of paraffin-embedded human esophageal tissue using KDM1 antibody (CAB15794) at dilution of 1:100 (40x lens).