

NBEAL2 Rabbit Polyclonal Antibody



CAB15797

Product Information

Size:

20uL, 50uL, 100uL, 200uL

Observed MW:

302kDa

Calculated MW:

282kDa/299kDa/302kDa

Applications:

WB

Reactivity:

Human

Protein Background

The protein encoded by this gene contains a beige and Chediak-Higashi (BEACH) domain and multiple WD40 domains, and may play a role in megakaryocyte alpha-granule biogenesis. Mutations in this gene are a cause of gray platelet syndrome.

Immunogen information

Gene ID:

23218

Uniprot

Q6ZNJ1

Synonyms:

NBEAL2; BDPLT4; GPS

Antibody Information

Recommended dilutions:

WB 1:500 - 1:2000

Source:

Rabbit

Isotype:

IgG

Purification:

Affinity purification

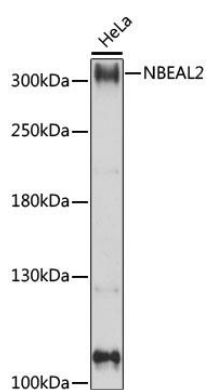
Immunogen:

Recombinant fusion protein containing a sequence corresponding to amino acids 1800-2100 of human NBEAL2 (NP_055990.1).

Storage:

Store at -20°C. Avoid freeze / thaw cycles. Buffer: PBS with 0.02% sodium azide, 50% glycerol, pH7.3.

Product Images



Western blot analysis of extracts of HeLa cells, using NBEAL2 antibody (CAB15797) at 1:1000 dilution. Secondary antibody: HRP Goat Anti-Rabbit IgG (H+L) (CABS014) at 1:10000 dilution. Lysates/proteins: 25ug per lane. Blocking buffer: 3% nonfat dry milk in TBST. Detection: ECL Basic Kit (CABM00020). Exposure time: 5s.