

# SPECC1L Rabbit Polyclonal Antibody



CAB15798

## Product Information

### Size:

20uL, 50uL, 100uL, 200uL

### Observed MW:

168kDa

### Calculated MW:

120kDa/124kDa

### Applications:

WB IHC

### Reactivity:

Human

## Protein Background

This gene encodes a coiled-coil domain containing protein. The encoded protein may play a critical role in actin-cytoskeletal reorganization during facial morphogenesis. Mutations in this gene are a cause of oblique facial clefting-1. Alternatively spliced transcript variants encoding multiple isoforms have been observed for this gene. A read-through transcript composed of SPECC1L (sperm antigen with calponin homology and coiled-coil domains 1-like) and the downstream ADORA2A (adenosine A2a receptor) gene sequence has been identified, but it is thought to be non-coding.

## Immunogen information

### Gene ID:

23384

### Uniprot

Q69YQ0

### Synonyms:

SPECC1L; CYTSA; GBBB2; OBLFC1

## Antibody Information

### Recommended dilutions:

WB 1:500 - 1:2000 IHC 1:50  
- 1:200

### Source:

Rabbit

### Isotype:

IgG

### Purification:

Affinity purification

### Immunogen:

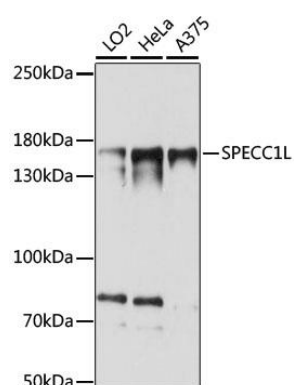
Recombinant fusion protein containing a sequence corresponding to amino acids 200-500 of human SPECC1L (NP\_056145.4).

### Storage:

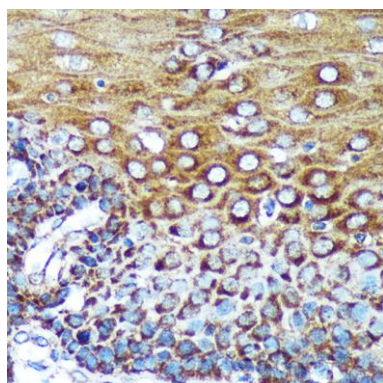
Store at -20°C. Avoid freeze / thaw cycles. Buffer: PBS with 0.02% sodium azide, 50% glycerol, pH7.3.

## Product Images

---



Western blot analysis of extracts of various cell lines, using SPECC1L antibody (CAB15798) at 1:1000 dilution. Secondary antibody: HRP Goat Anti-Rabbit IgG (H+L) (CABS014) at 1:10000 dilution. Lysates/proteins: 25ug per lane. Blocking buffer: 3% nonfat dry milk in TBST. Detection: ECL Basic Kit (CABM00020). Exposure time: 15s.



Immunohistochemistry of paraffin-embedded Human esophageal using SPECC1L Rabbit pAb (CAB15798) at dilution of 1:100 (40x lens).