

CD11B Rabbit Polyclonal Antibody



CAB1581

Product Information

Size:

20uL, 50uL, 100uL, 200uL

Observed MW:

180kDa

Calculated MW:

127kDa

Applications:

WB, IHC, IF

Reactivity:

Human, Mouse, Rat

Category:

Polyclonal Antibodies

Protein Background

This gene encodes the integrin alpha M chain. Integrins are heterodimeric integral membrane proteins composed of an alpha chain and a beta chain. This I-domain containing alpha integrin combines with the beta 2 chain (ITGB2) to form a leukocyte-specific integrin referred to as macrophage receptor 1 ('Mac-1'), or inactivated-C3b (iC3b) receptor 3 ('CR3'). The alpha M beta 2 integrin is important in the adherence of neutrophils and monocytes to stimulated endothelium, and also in the phagocytosis of complement coated particles. Multiple transcript variants encoding different isoforms have been found for this gene.

Immunogen information

Gene ID:

3684

Uniprot

P11215

Synonyms:

CD11B; CR3A; MAC-1; MAC1A; MO1A; SLEB6; ITGAM; CD11b/ITAM

Antibody Information

Recommended dilutions:

WB 1:500 - 1:2000

IHC 1:50 - 1:200

IF 1:50 - 1:200

Source:

Rabbit

Isotype:

IgG

Purification:

Affinity purification

Immunogen:

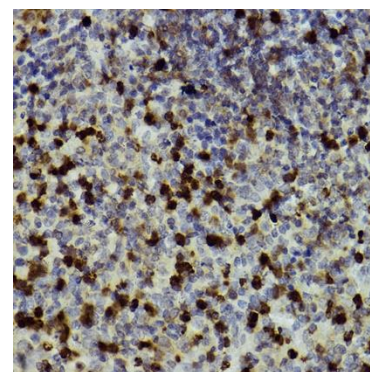
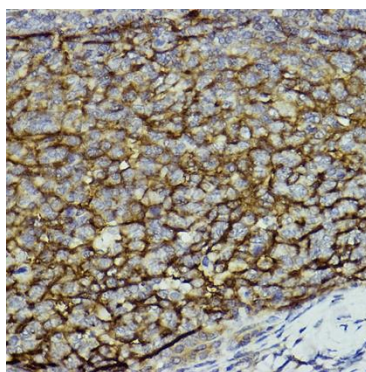
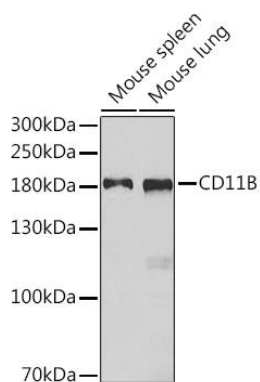
Recombinant fusion protein containing a sequence corresponding to amino acids 20-330 of human CD11B (NP_001139280.1).

Storage:

Store at -20°C. Avoid freeze / thaw cycles.

Buffer: PBS with 0.02% sodium azide, 50% glycerol, pH7.3.

Product Images



Western blot analysis of extracts of various cell lines, using CD11B antibody (CAB1581) at 1:1000 dilution.

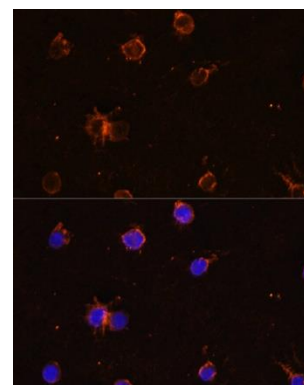
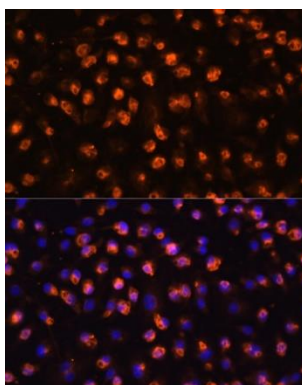
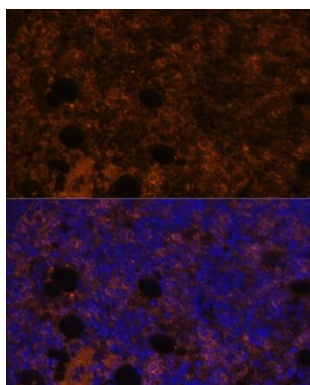
Secondary antibody: HRP Goat Anti-Rabbit IgG (H+L) (CABS014) at 1:10000 dilution.

Lysates/proteins: 25ug per lane.

Blocking buffer: 3% non-fat dry milk in TBST.

Immunohistochemistry of paraffin-embedded human tonsil using CD11b/ITGAM antibody (CAB1581) at dilution of 1:100 (40x lens).

Immunohistochemistry of paraffin-embedded mouse spleen using CD11b/ITGAM antibody (CAB1581) at dilution of 1:100 (40x lens).



Immunofluorescence analysis of rat bone marrow using CD11B antibody (CAB1581) at dilution of 1:100. Blue: DAPI for nuclear staining.

Immunofluorescence analysis of RAW264.7 cells using CD11B antibody (CAB1581) at dilution of 1:100. Blue: DAPI for nuclear staining.

Immunofluorescence analysis of THP-1 cells using CD11B antibody (CAB1581) at dilution of 1:100. Blue: DAPI for nuclear staining.