

POLDIP2 Rabbit Polyclonal Antibody



CAB15812

Product Information

Size:

20uL, 50uL, 100uL, 200uL

Observed MW:

38kDa

Calculated MW:

42kDa

Applications:

WB

Reactivity:

Human, Mouse, Rat

Protein Background

This gene encodes a protein that interacts with the DNA polymerase delta p50 subunit, as well as with proliferating cell nuclear antigen. The encoded protein may play a role in the ability of the replication fork to bypass DNA lesions. Alternative splicing results in multiple transcript variants.

Immunogen information

Gene ID:

26073

Uniprot

Q9Y2S7

Synonyms:

POLDIP2; PDIP38; POLD4; p38

Antibody Information

Recommended dilutions:

WB 1:500 - 1:2000

Source:

Rabbit

Isotype:

IgG

Purification:

Affinity purification

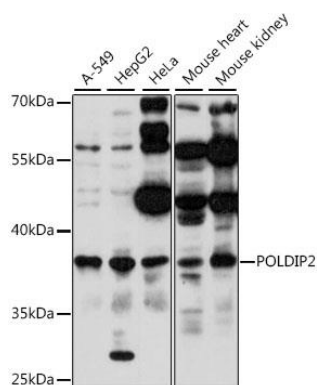
Immunogen:

A synthetic peptide corresponding to a sequence within amino acids 250-350 of human POLDIP2 (NP_056399.1).

Storage:

Store at -20°C. Avoid freeze / thaw cycles. Buffer: PBS with 0.02% sodium azide, 50% glycerol, pH7.3.

Product Images



Western blot analysis of extracts of various cell lines, using POLDIP2 antibody (CAB15812) at 1:1000 dilution. Secondary antibody: HRP Goat Anti-Rabbit IgG (H+L) (CABS014) at 1:10000 dilution. Lysates/proteins: 25ug per lane. Blocking buffer: 3% nonfat dry milk in TBST. Detection: ECL Basic Kit (CABM00020). Exposure time: 10s.