

MMADHC Rabbit Polyclonal Antibody



CAB15820

Product Information

Size:

20uL, 50uL, 100uL, 200uL

Observed MW:

33kDa

Calculated MW:

32kDa

Applications:

WB

Reactivity:

Human, Mouse, Rat

Protein Background

This gene encodes a mitochondrial protein that is involved in an early step of vitamin B12 metabolism. Vitamin B12 (cobalamin) is essential for normal development and survival in humans. Mutations in this gene cause methylmalonic aciduria and homocystinuria type cbID (MMADHC), a disorder of cobalamin metabolism that is characterized by decreased levels of the coenzymes adenosylcobalamin and methylcobalamin. Pseudogenes have been identified on chromosomes 11 and X.

Immunogen information

Gene ID:

27249

Uniprot

Q9H3L0

Synonyms:

MMADHC; C2orf25; CL25022; cbID; cbID type

Antibody Information

Recommended dilutions:

WB 1:500 - 1:2000

Source:

Rabbit

Isotype:

IgG

Purification:

Affinity purification

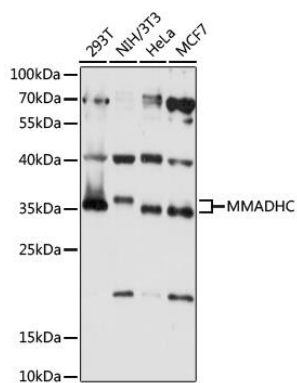
Immunogen:

Recombinant fusion protein containing a sequence corresponding to amino acids 1-296 of human MMADHC (NP_056517.1).

Storage:

Store at -20°C. Avoid freeze / thaw cycles. Buffer: PBS with 0.02% sodium azide, 50% glycerol, pH7.3.

Product Images



Western blot analysis of extracts of various cell lines, using MMADHC antibody (CAB15820) at 1:1000 dilution. Secondary antibody: HRP Goat Anti-Rabbit IgG (H+L) (CABS014) at 1:10000 dilution. Lysates/proteins: 25ug per lane. Blocking buffer: 3% nonfat dry milk in TBST. Detection: ECL Basic Kit (CABM00020). Exposure time: 10s.