

# C18orf8 Rabbit Polyclonal Antibody



CAB15825

---

## Product Information

### Size:

20uL, 50uL, 100uL, 200uL

### Observed MW:

75kDa

### Calculated MW:

74kDa

### Applications:

WB IHC IF

### Reactivity:

Human, Mouse, Rat

## Antibody Information

### Recommended dilutions:

WB 1:500 - 1:2000 IHC 1:50  
- 1:200 IF 1:50 - 1:200

### Source:

Rabbit

### Isotype:

IgG

### Purification:

Affinity purification

## Protein Background

This gene encodes a colon cancer associated protein.

## Immunogen information

### Gene ID:

29919

### Uniprot

Q96DM3

### Synonyms:

C18orf8; HsT2591; MIC1; Mic-1

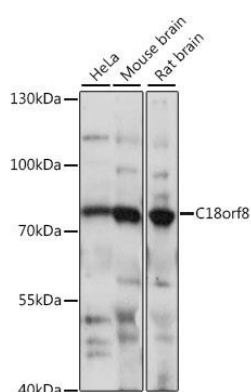
### Immunogen:

Recombinant fusion protein containing a sequence corresponding to amino acids 1-300 of human C18orf8 (NP\_037458.3).

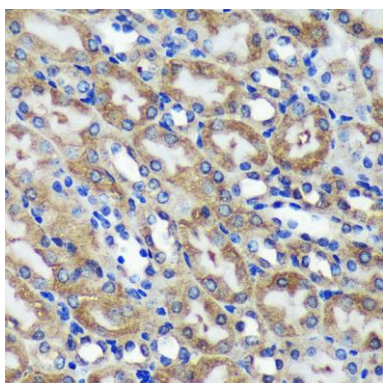
### Storage:

Store at -20°C. Avoid freeze / thaw cycles. Buffer: PBS with 0.02% sodium azide, 50% glycerol, pH7.3.

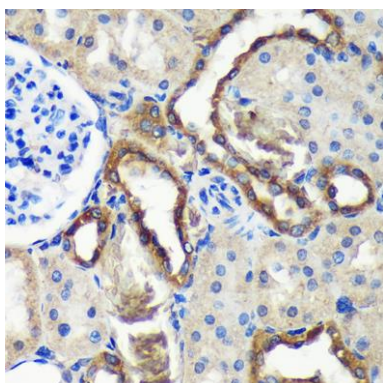
## Product Images



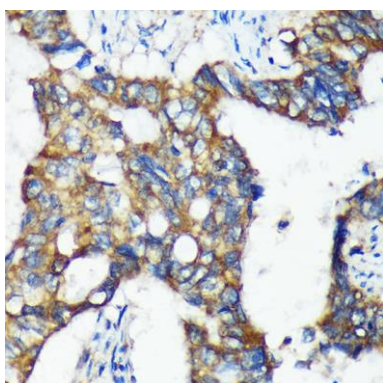
Western blot analysis of extracts of various cell lines, using C18orf8 antibody (CAB15825) at 1:1000 dilution. Secondary antibody: HRP Goat Anti-Rabbit IgG (H+L) (CABS014) at 1:10000 dilution. Lysates/proteins: 25ug per lane. Blocking buffer: 3% nonfat dry milk in TBST. Detection: ECL Basic Kit (CABM00020). Exposure time: 10s.



Immunohistochemistry of paraffin-embedded Mouse kidney using C18orf8 Rabbit pAb (CAB15825) at dilution of 1:100 (40x lens).



Immunohistochemistry of paraffin-embedded Rat kidney using C18orf8 Rabbit pAb (CAB15825) at dilution of 1:100 (40x lens).



Immunohistochemistry of paraffin-embedded Human colon carcinoma using C18orf8 Rabbit pAb (CAB15825) at dilution of 1:100 (40x lens).