

MYEF2 Rabbit Polyclonal Antibody



CAB15829

Product Information

Size:

20uL, 50uL, 100uL, 200uL

Observed MW:

64kDa

Calculated MW:

14kDa/20kDa/61kDa/64kDa

Applications:

WB IHC IF

Reactivity:

Human, Mouse, Rat

Antibody Information

Recommended dilutions:

WB 1:500 - 1:2000 IHC 1:50
- 1:200 IF 1:50 - 1:200

Source:

Rabbit

Isotype:

IgG

Purification:

Affinity purification

Protein Background

Immunogen information

Gene ID:

50804

Uniprot

Q9P2K5

Synonyms:

MYEF2; HsT18564; MEF-2; MST156; MSTP156; myEF-2

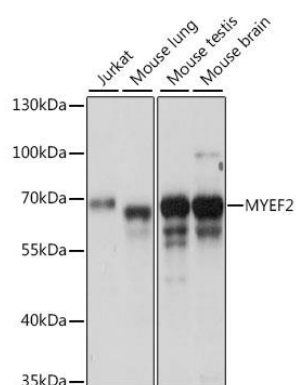
Immunogen:

Recombinant fusion protein containing a sequence corresponding to amino acids 1-120 of human MYEF2 (NP_001288139.1).

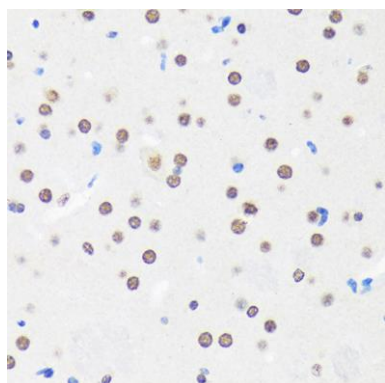
Storage:

Store at -20°C. Avoid freeze / thaw cycles. Buffer: PBS with 0.02% sodium azide, 50% glycerol, pH7.3.

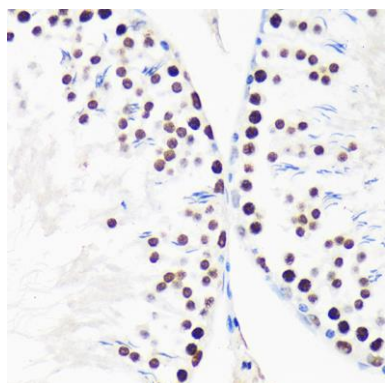
Product Images



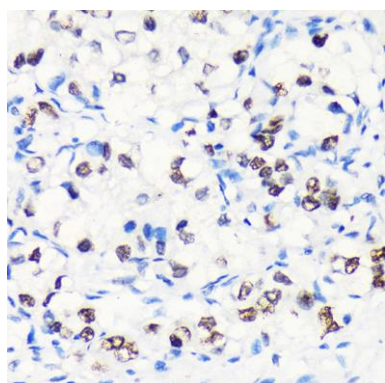
Western blot analysis of extracts of various cell lines, using MYEF2 antibody (CAB15829) at 1:1000 dilution. Secondary antibody: HRP Goat Anti-Rabbit IgG (H+L) (CABS014) at 1:10000 dilution. Lysates/proteins: 25ug per lane. Blocking buffer: 3% nonfat dry milk in TBST. Detection: ECL Basic Kit (CABM00020). Exposure time: 30s.



Immunohistochemistry of paraffin-embedded Mouse brain using MYEF2 Rabbit pAb (CAB15829) at dilution of 1:100 (40x lens).



Immunohistochemistry of paraffin-embedded Rat testis using MYEF2 Rabbit pAb (CAB15829) at dilution of 1:100 (40x lens).



Immunohistochemistry of paraffin-embedded Human liver cancer using MYEF2 Rabbit pAb (CAB15829) at dilution of 1:100 (40x lens).